



Monthly Market Indicators February 2011



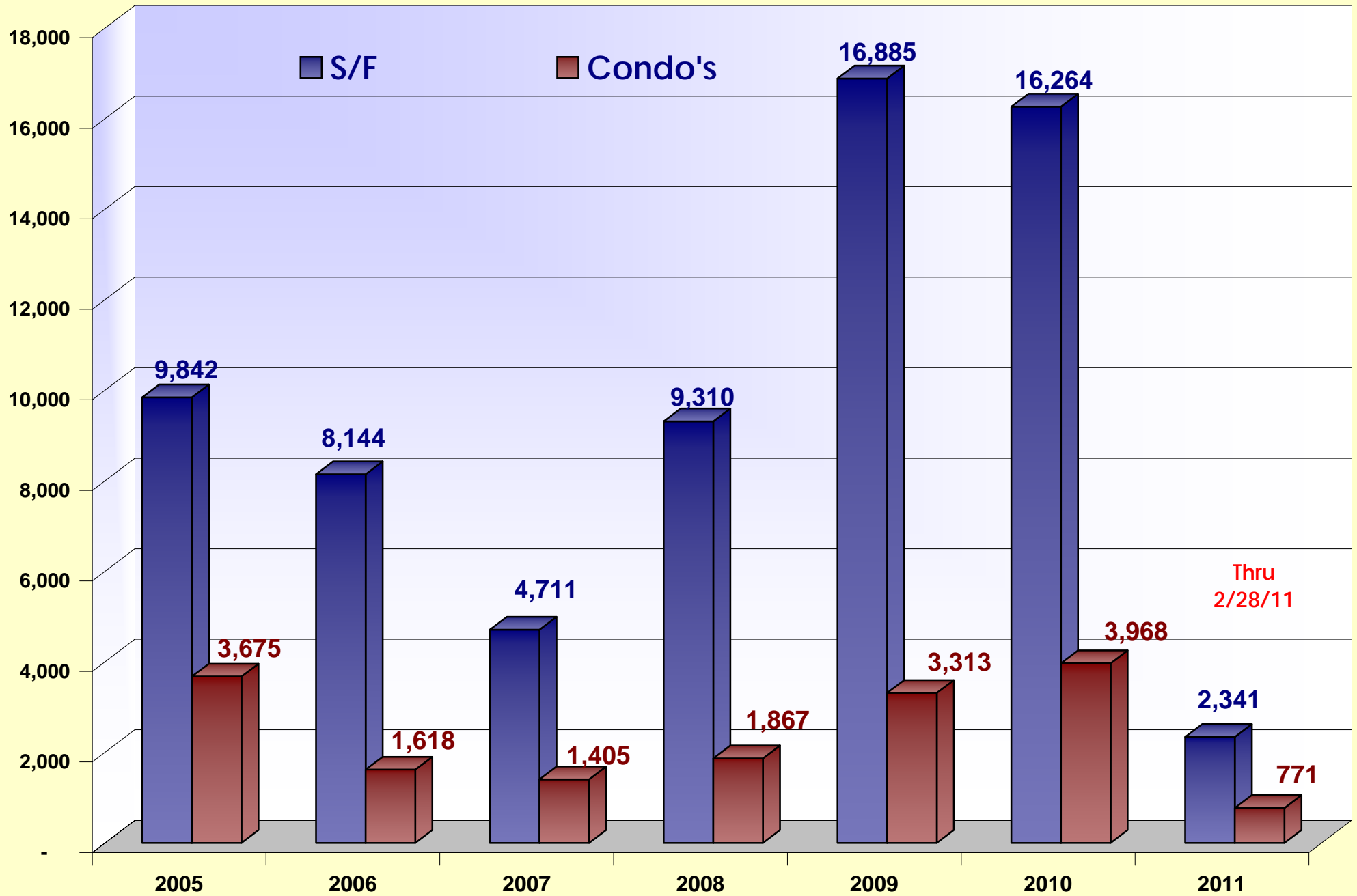
Contents:

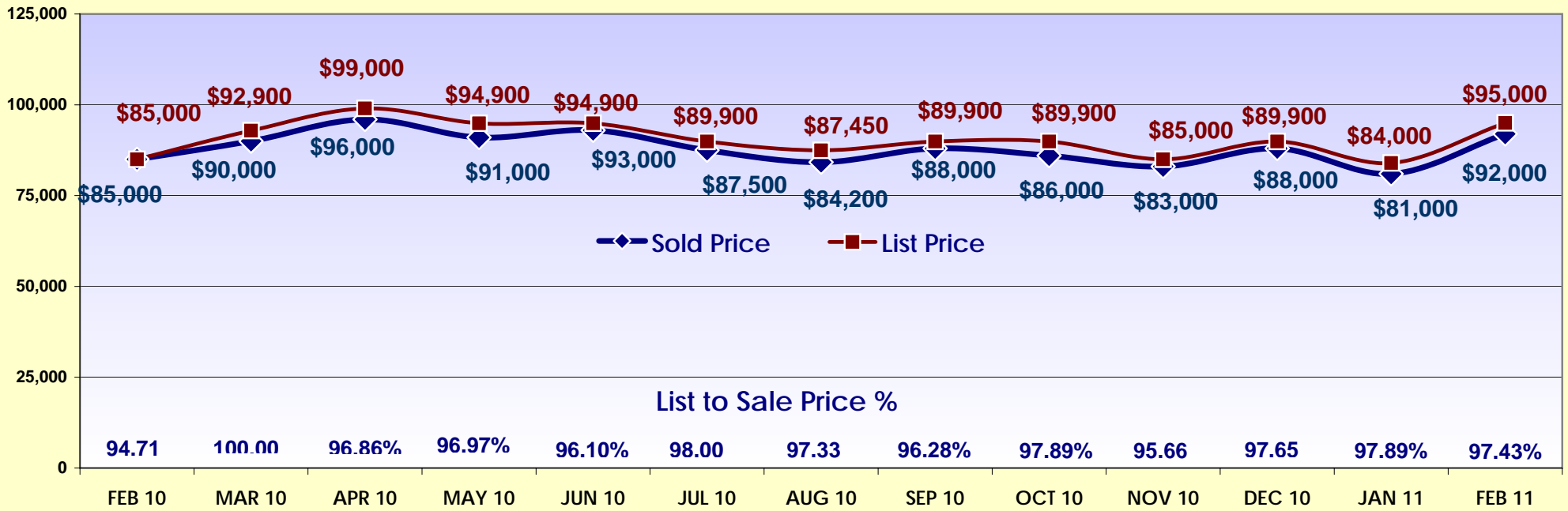
- Conventional/REO/Short Sale Single Family Sold
- Housing Supply Outlook
- Sold Properties by Cities
- 2004-2011 Properties Sold
- Absorption Rate
- Median Price Comparison by Year

Table of Contents

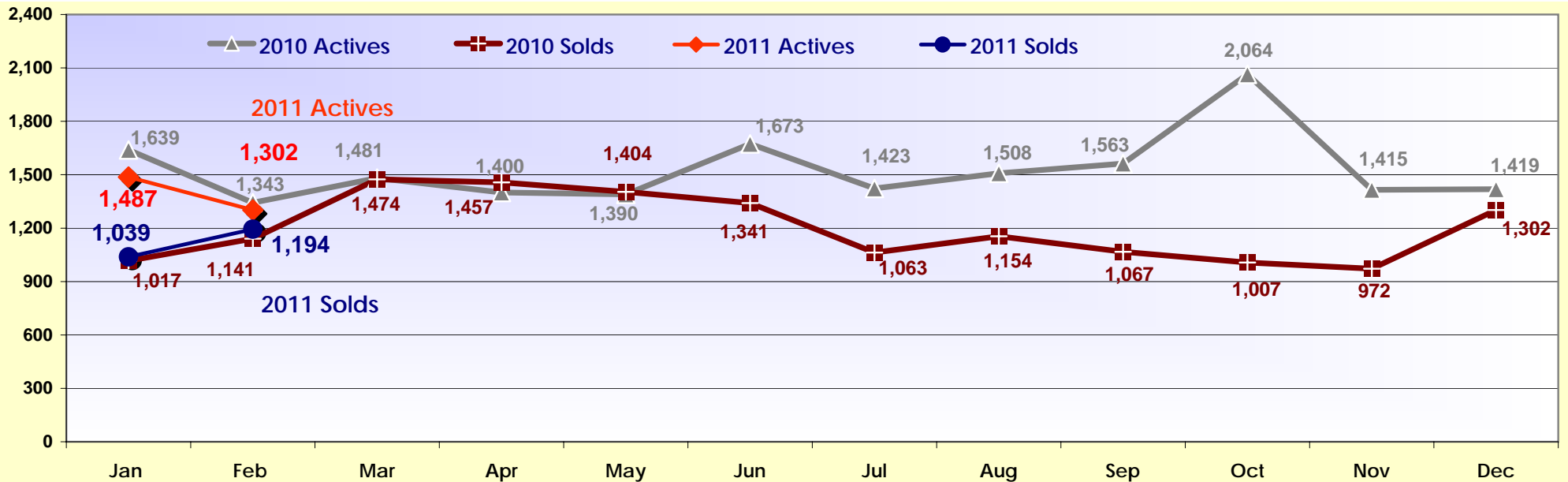
Page

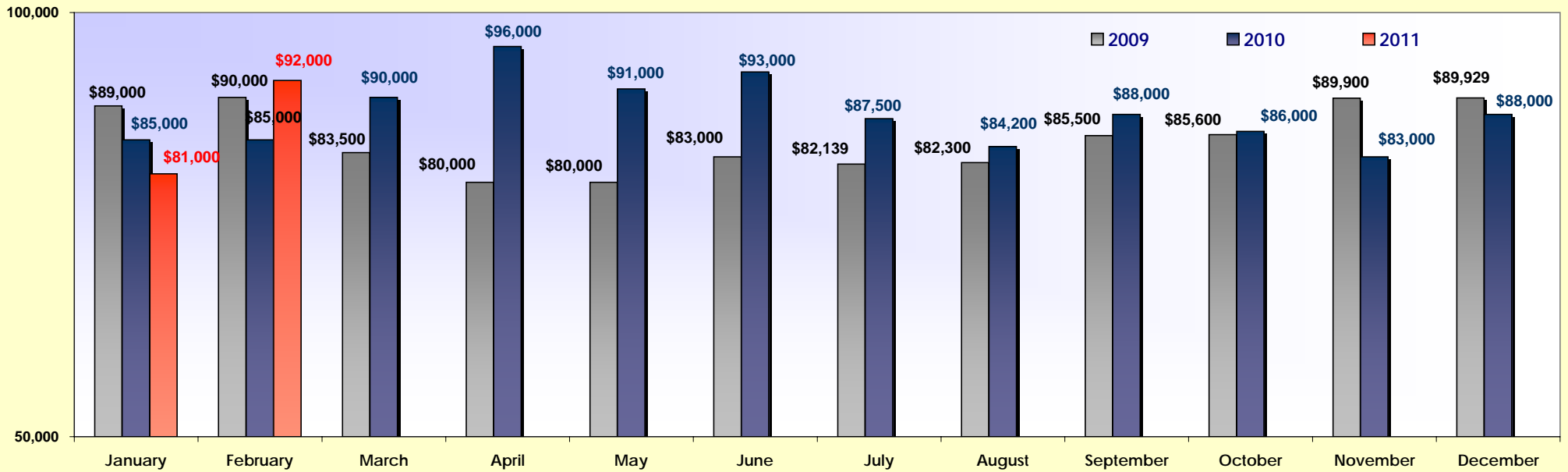
- | | |
|---|--|
| 5. Single Family & Condo Sales 2005 – 2011 | 17. Condos -Fort Myers & Fort Myers Bch By Type |
| 6. Median List Price & Percent Sold to Active Single Family | 18. Condos – N Fort Myers & Cape Coral By Type |
| 7. Median Price Comparison & Single Family Solds | 19. Condos - Lehigh Acres & Others By Type |
| 8. Housing Supply Outlook – Residential Monthly Inventory | 20. Sold Listings Pie Chart By Type |
| 9. Residential Housing Supply One Year Comparable | 21. DOM 12 Month Residential Comparable |
| 10. City Residential Housing Supply Outlook | 22. Lee County Single Family Sold 2009-2011 |
| 11. Absorption Rate – Single Family & Foreclosed/REO's | 23. Sold By City – FM, NFM, FMB, CC |
| 12. Lee County Single Family Sold By Type | 24. Sold By City - Lehigh, Other, Hendry, Glades |
| 13. S/F - Fort Myers & Fort Myers Beach Sold By Type | 25. Residential Weekly Market Activity |
| 14. S/F - No. Fort Myers & Cape Coral Sold By Type | 26. Single Family Properties Sold 2004-2011 |
| 15. S/F - Lehigh Acres & Other Areas Sold By Type | 27. Single Family Sold By Price Range |
| 16. Condos – 2009-2011 Sold Monthly & By Type | |



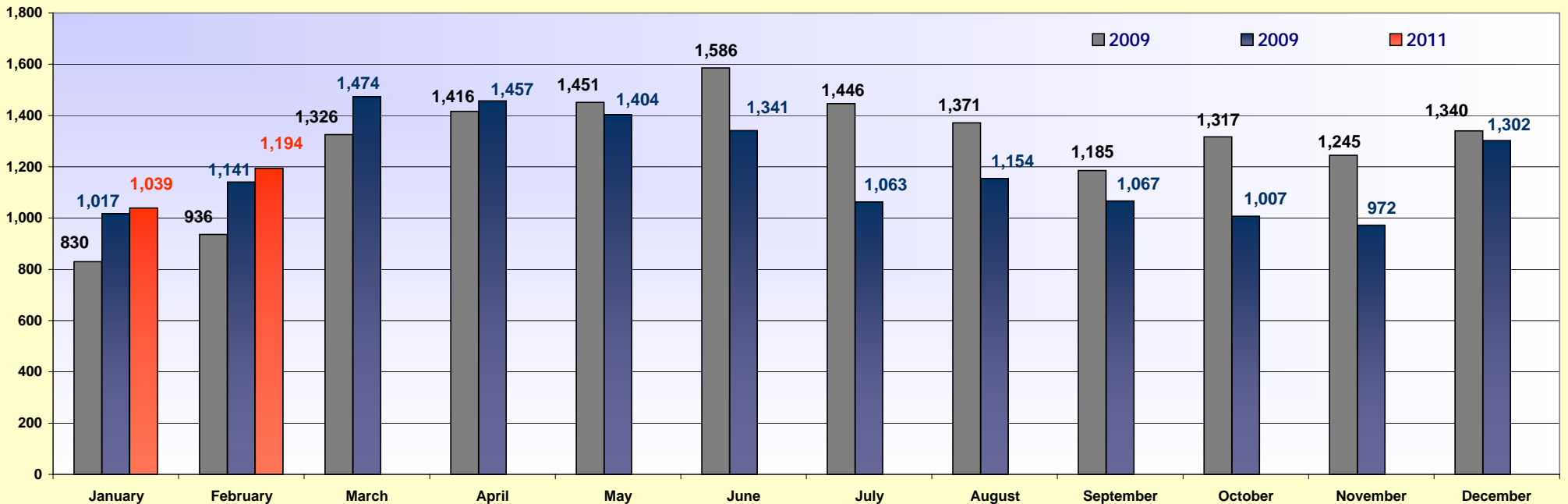


2010/2011 Single Family Listings - Monthly Sold and Active Listings



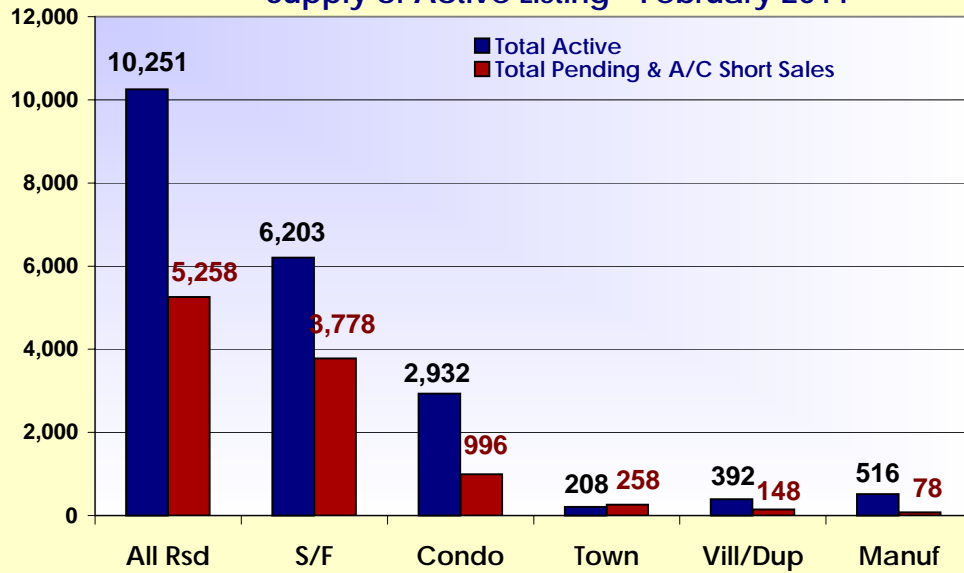


2009-2011 Monthly Totals of Single Family Solds

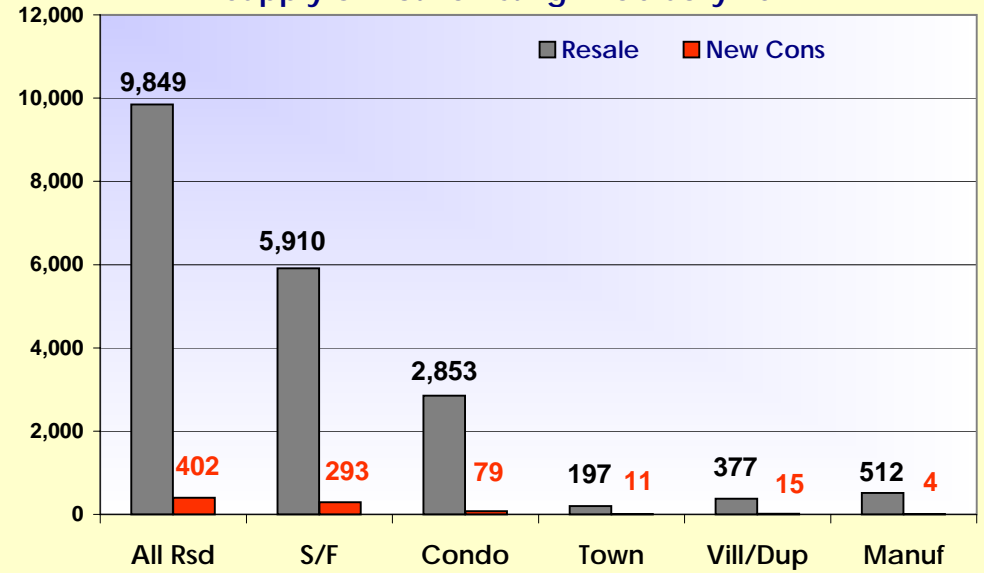


All Residential Properties - Active and Pendlings / Active Cont. Short Sale

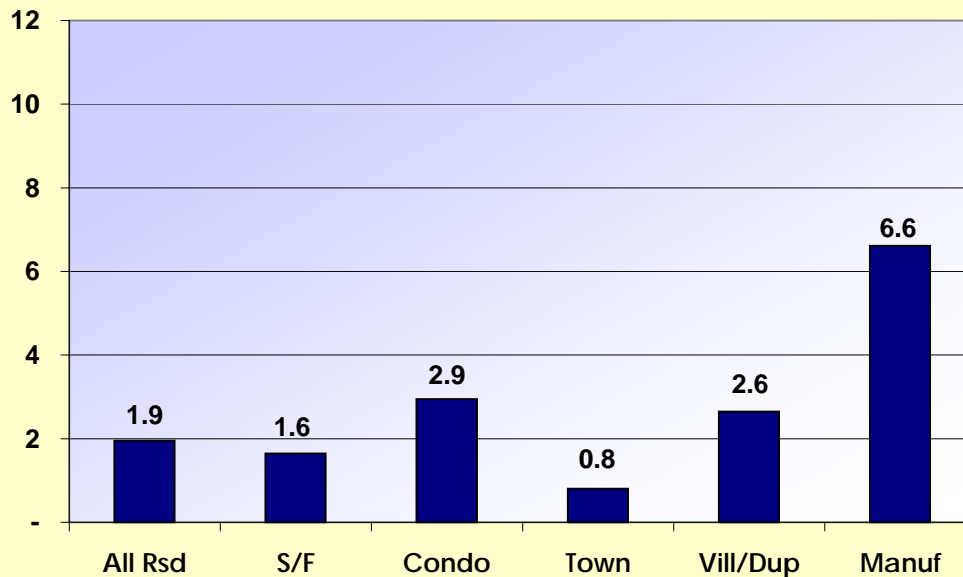
Supply of Active Listing - February 2011



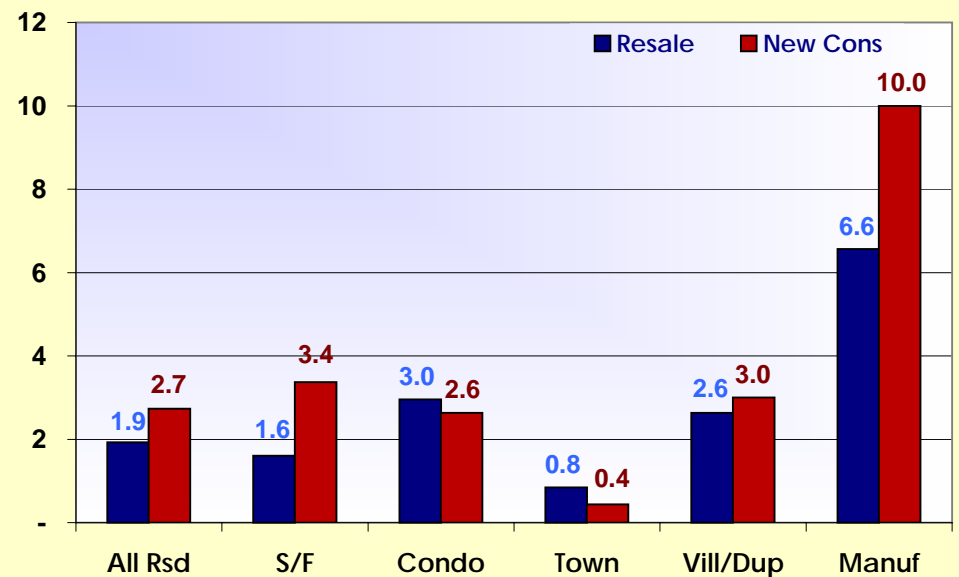
Supply of Active Listing - February 2011



Supply Outlook (Months of Inventory)

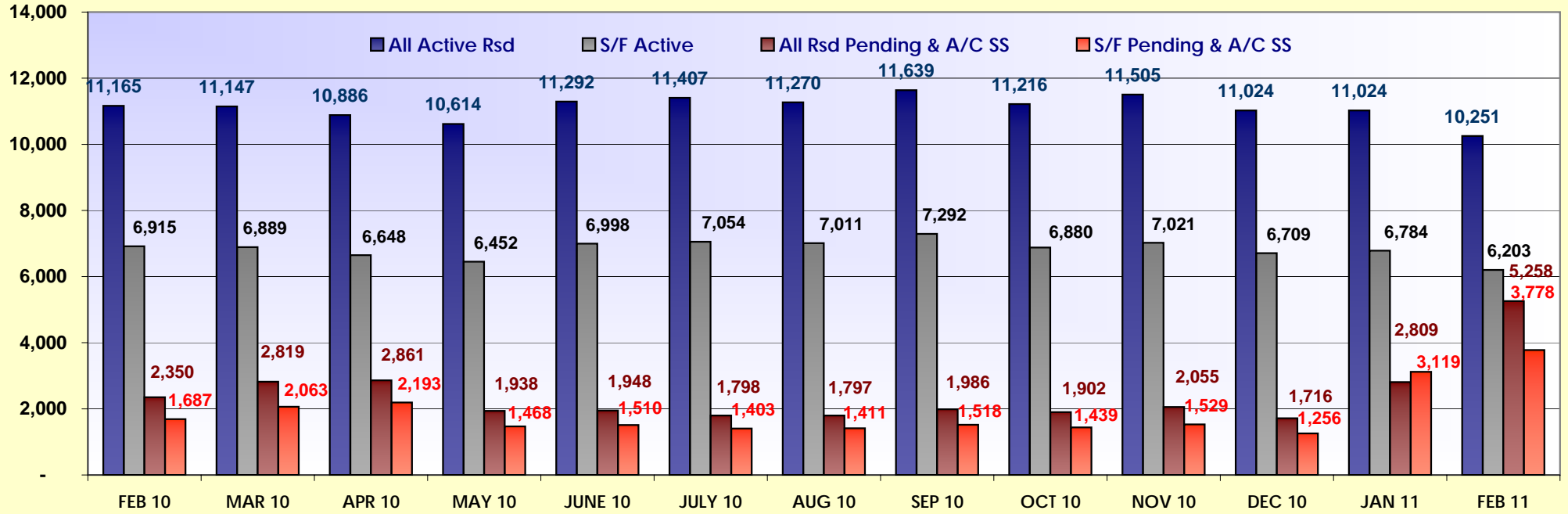


Supply Outlook (Months of Inventory)

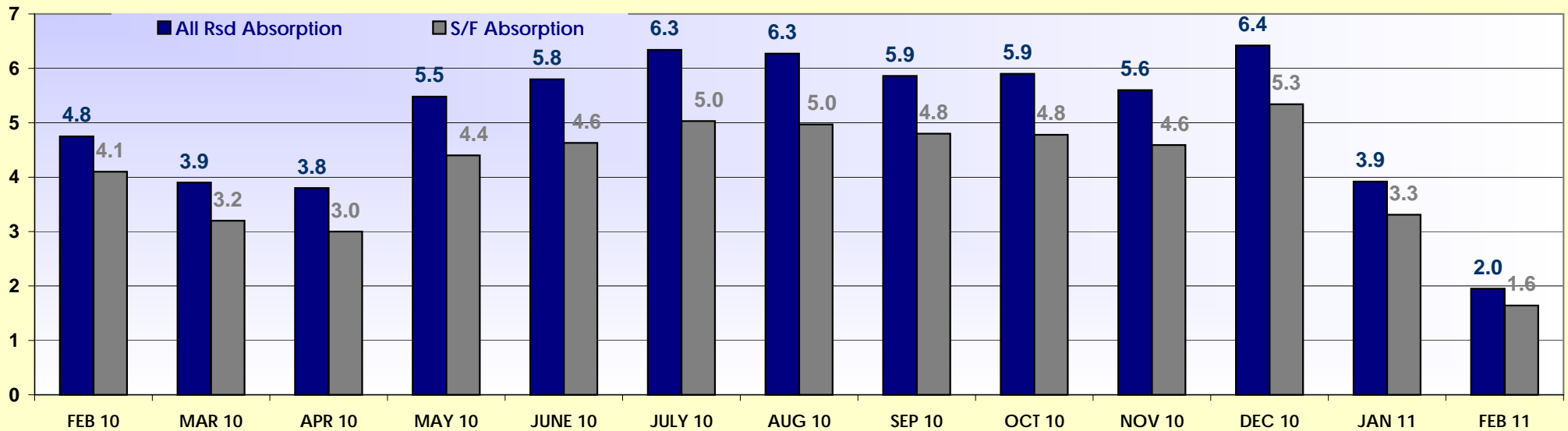


Supply Outlook Inventory (In Months) is Calculated by taking the Active Listings and Dividing them by Pending / Active Contingent Short Sale Listings.

Residential One Year Comparable - Actives & Pendlings/Active Contingent Short Sales



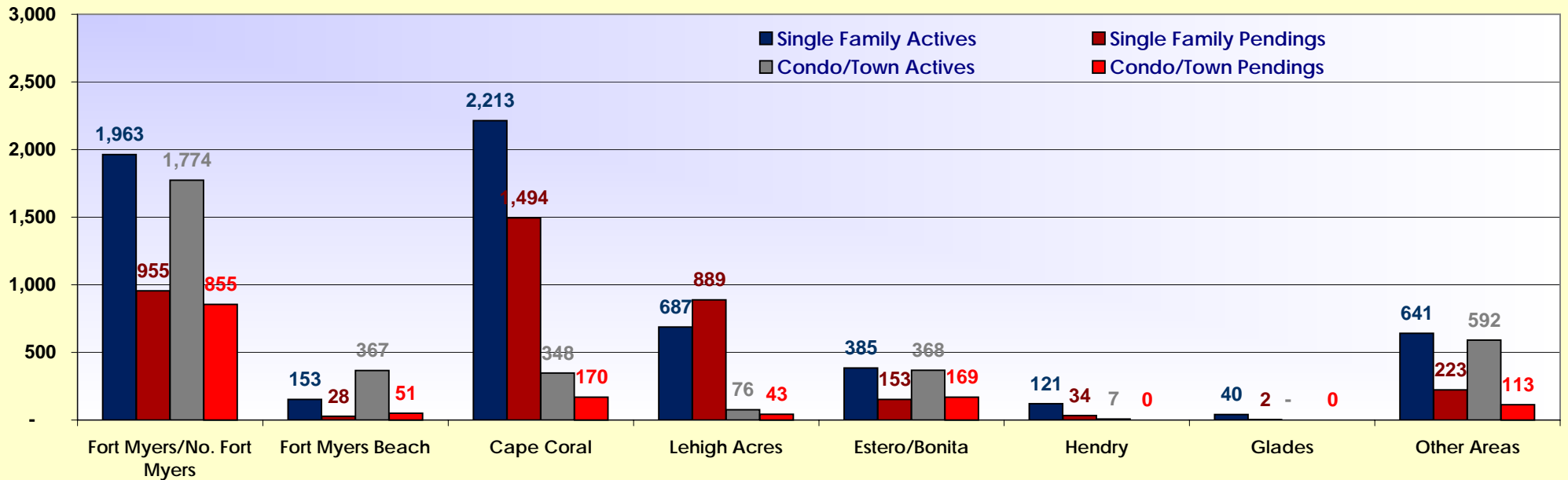
One Year Comparable - Supply Inventory (In Months)



SupplyOutlook Inventory (In Months) is Calculated by taking the Active Listings and Dividing them by Pending & Active Contingent Short Sale Listings.

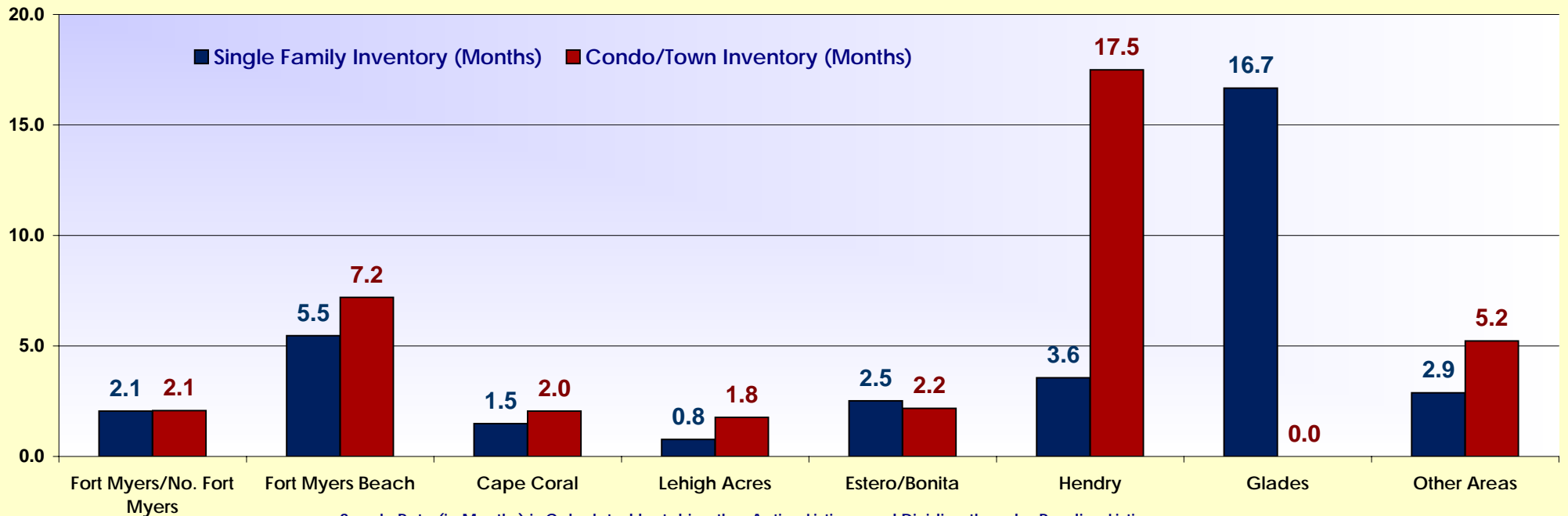
Breakout By City - Active/Pending Listings

February 2011

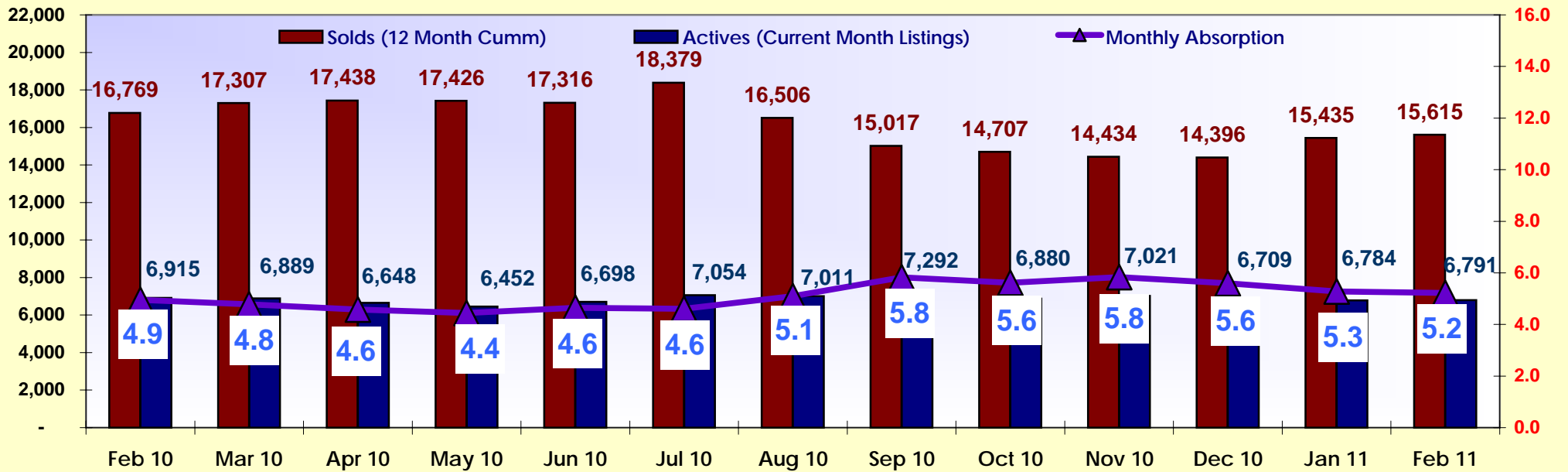


City Supply Rate (Months Of Inventory)

February 2011



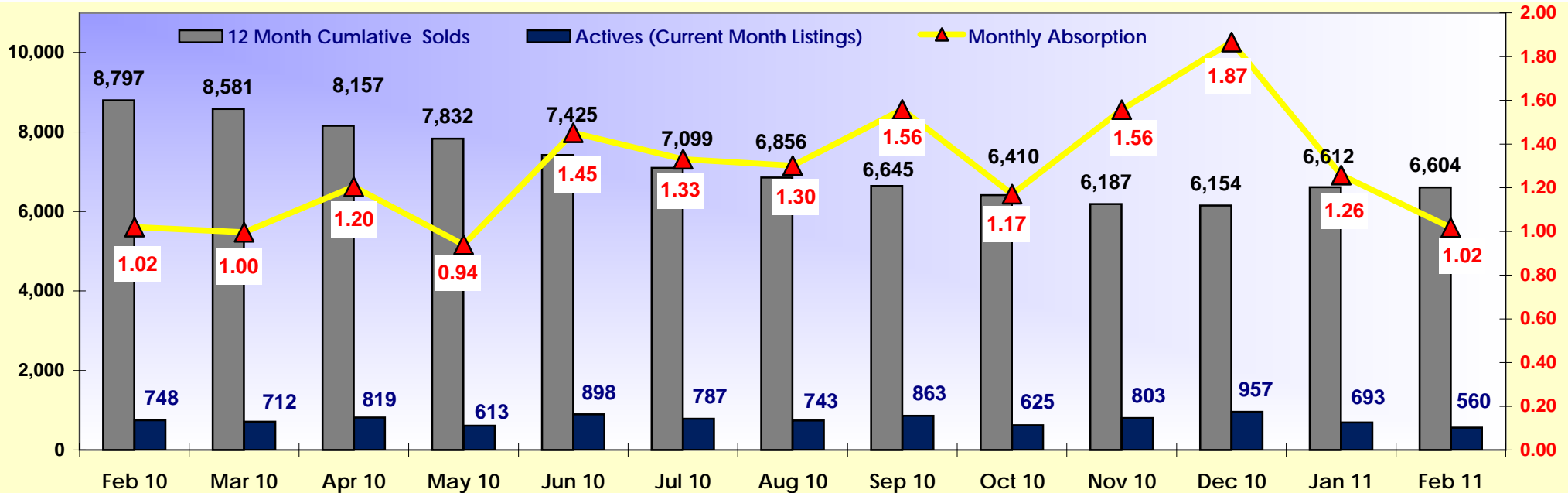
Supply Rate (in Months) is Calculated by taking the Active Listings and Dividing them by Pending Listings.



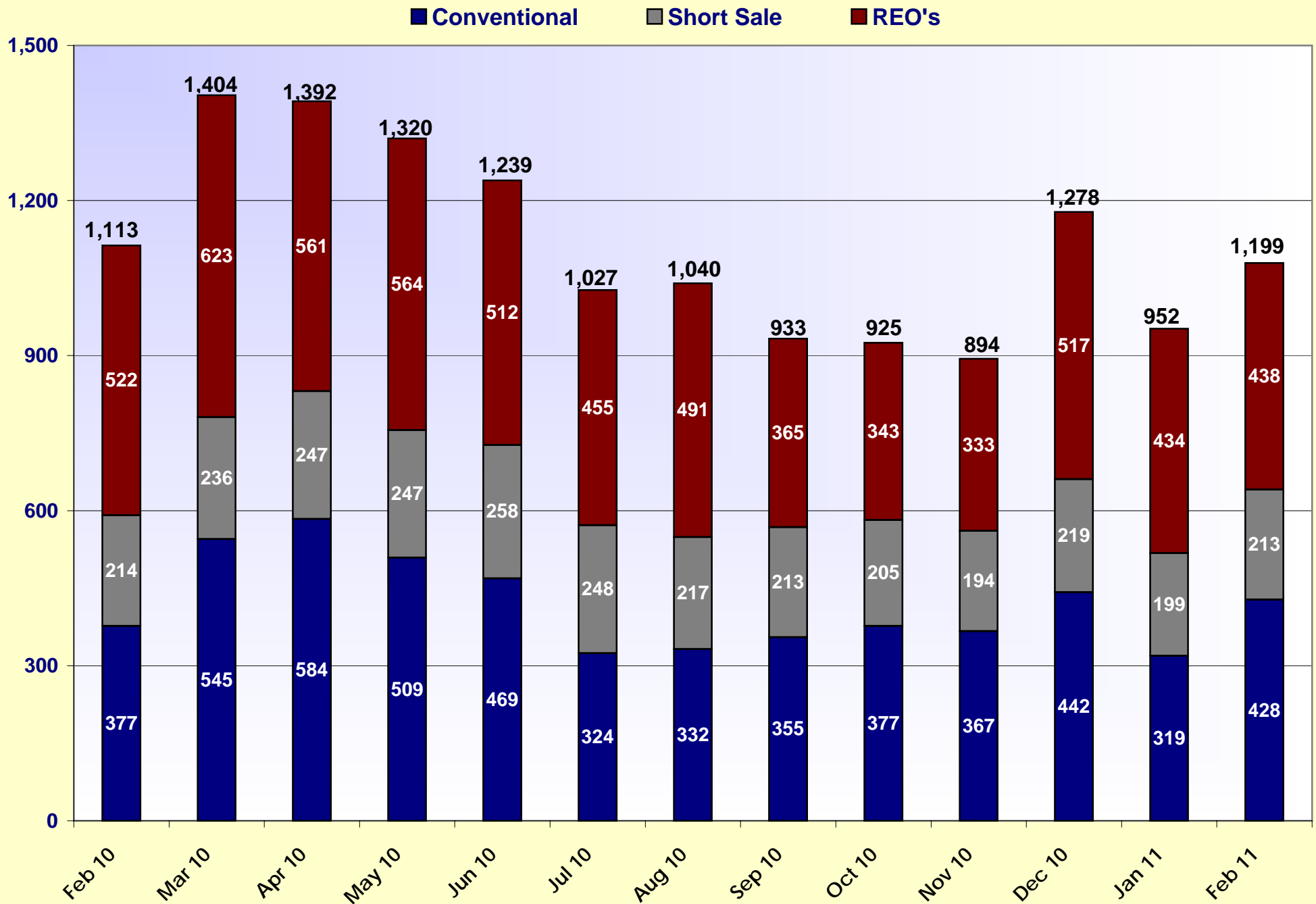
of Listings

Absorption Rate - Foreclosed/REO Single Family

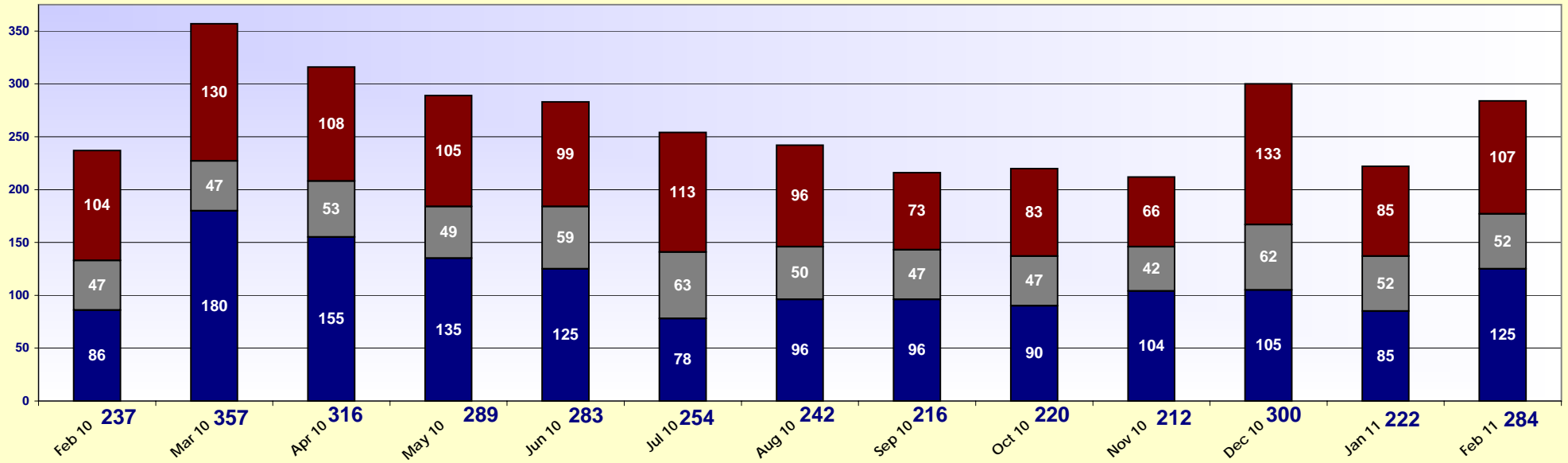
of Months



Absorption (NAR's calculation) - # of Sold Divided by 12 (# of Months) gives you the per month Absorption Rate. Divide Rate into the Actives for the Month. This gives you the Monthly Absorption.

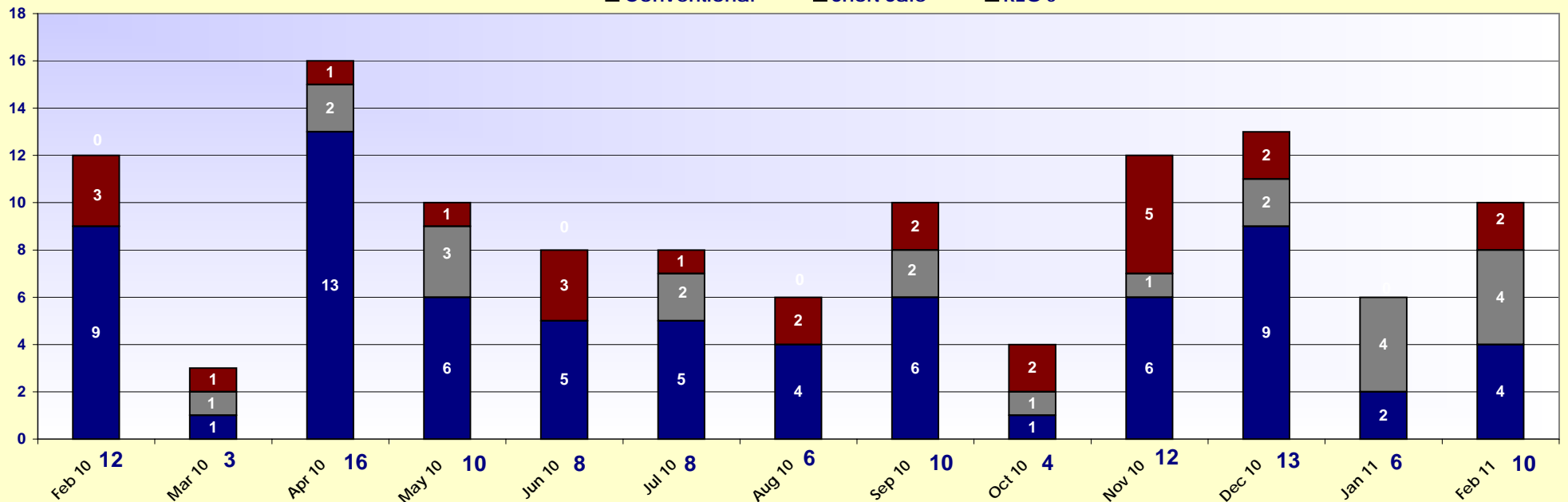


■ Conventional ■ Short Sale ■ REO's

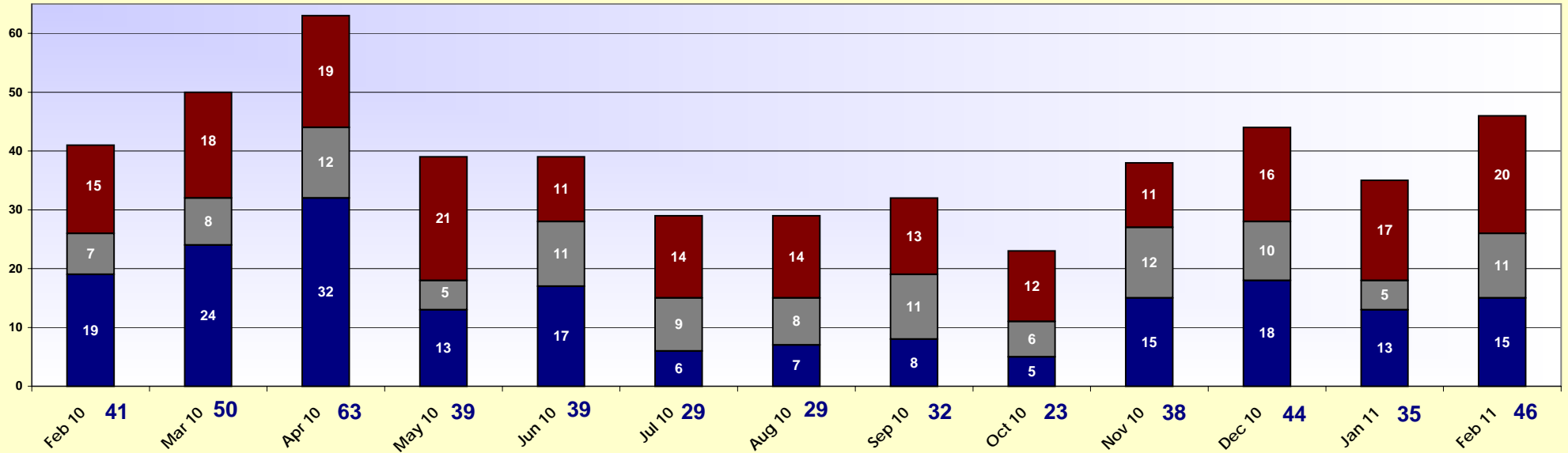


2010 / 2011 Sold Single Family - Fort Myers Beach

■ Conventional ■ Short Sale ■ REO's

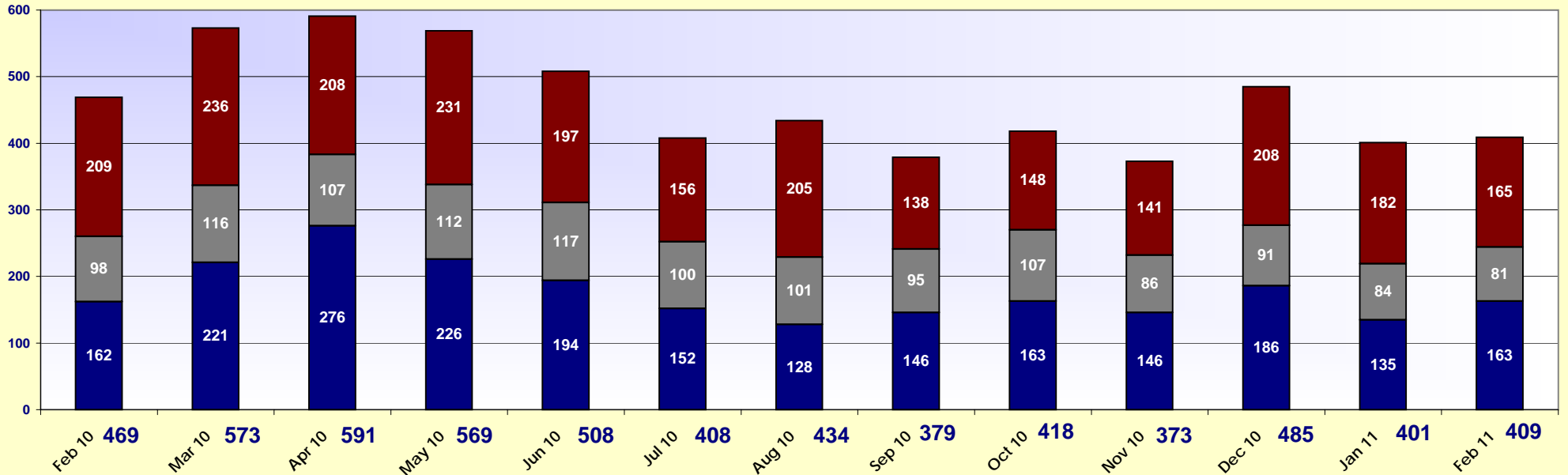


■ Conventional ■ Short Sale ■ REO's

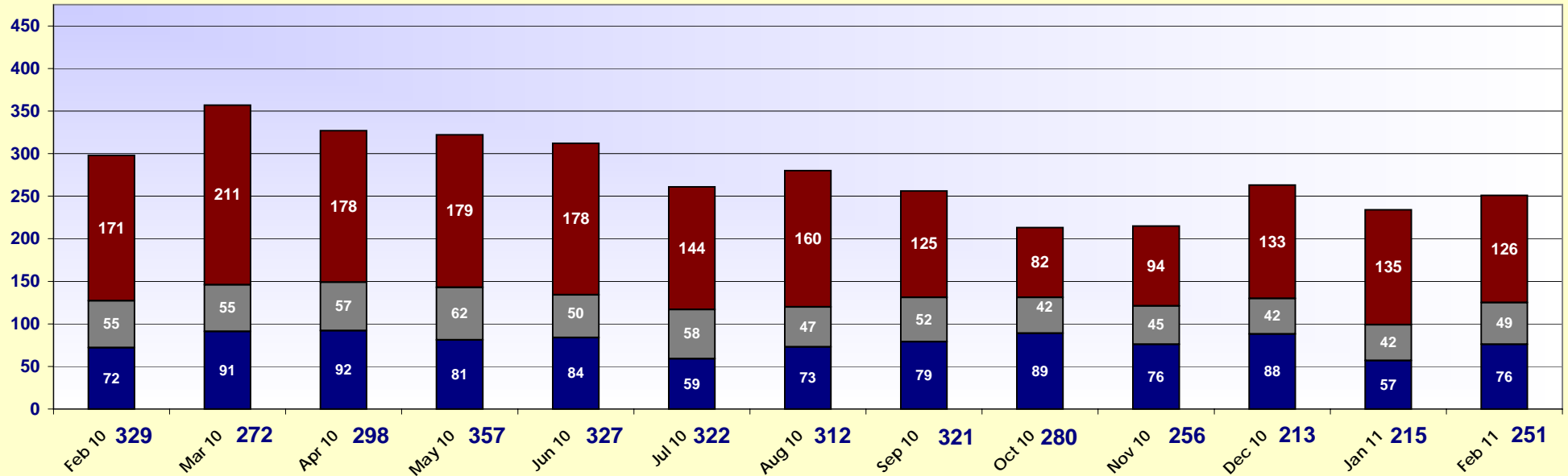


2010 / 2011 Sold Single Family - Cape Coral

■ Conventional ■ Short Sale ■ REO's

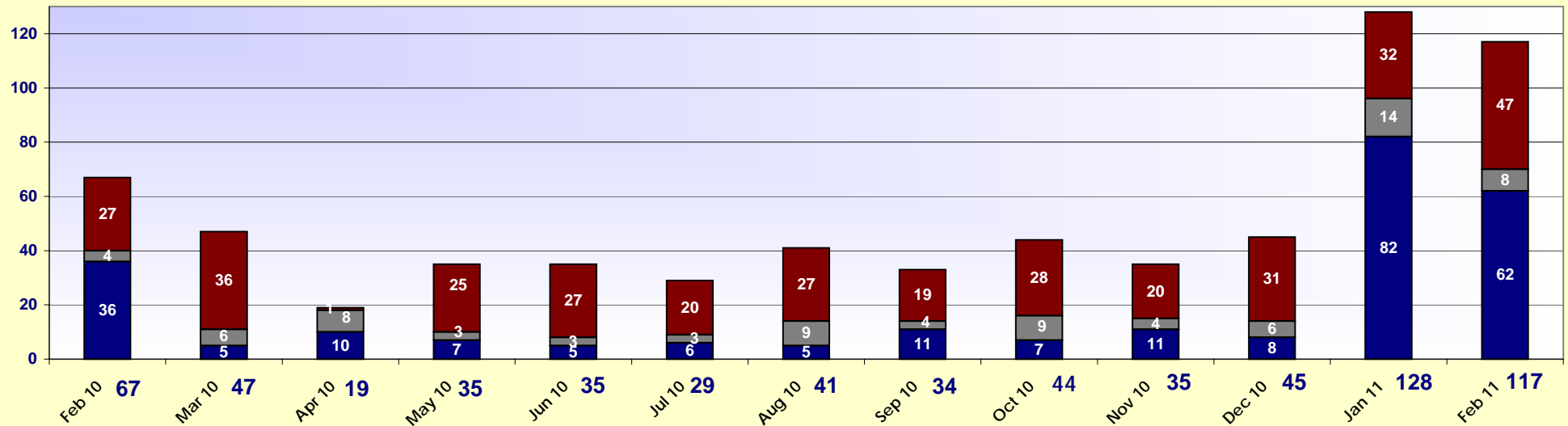


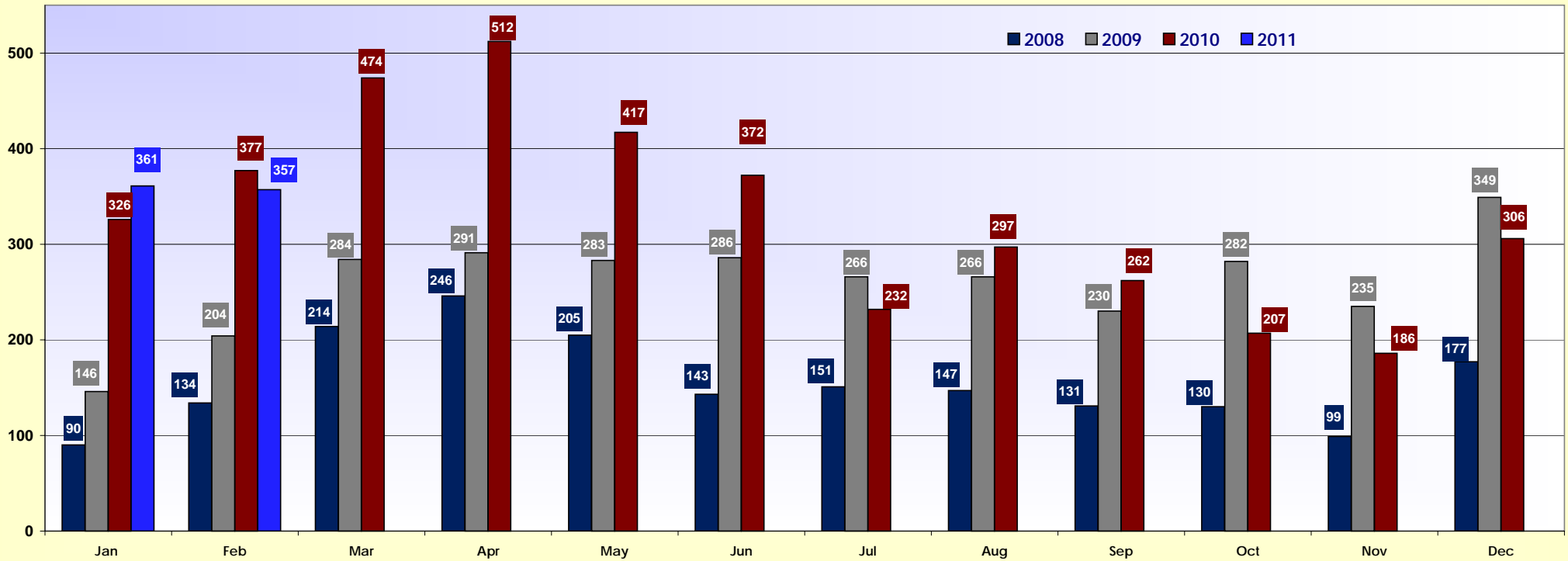
■ Conventional ■ Short Sale ■ REO's



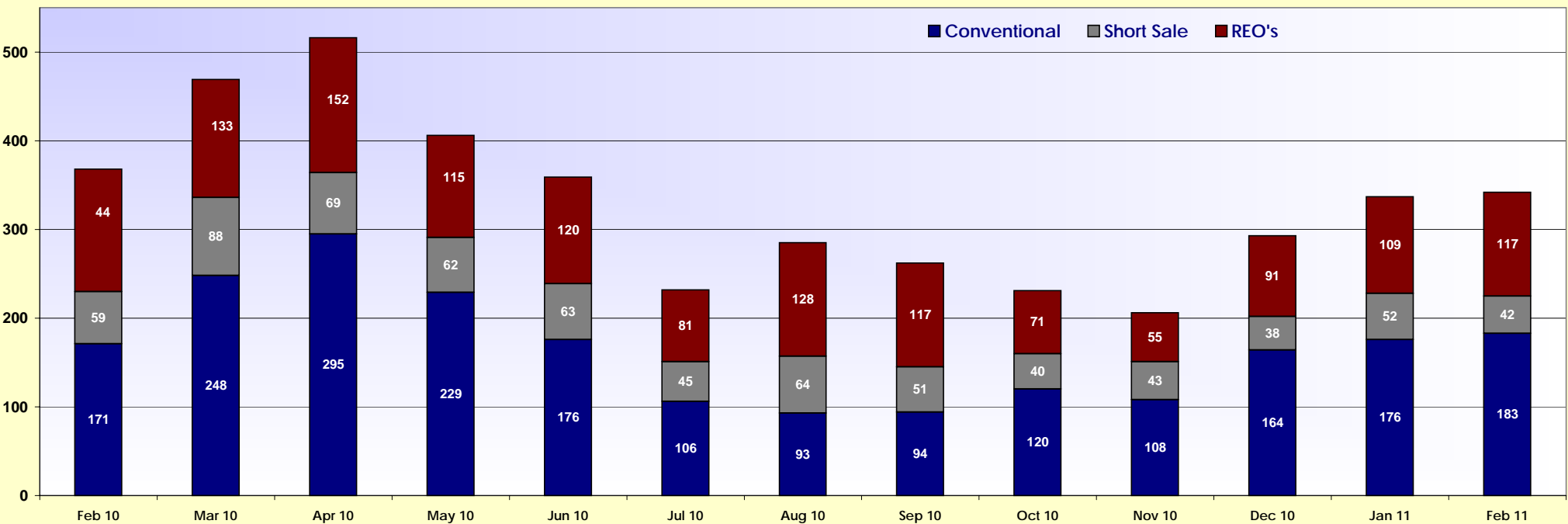
2010 / 2011 Sold Single Family - Other Areas

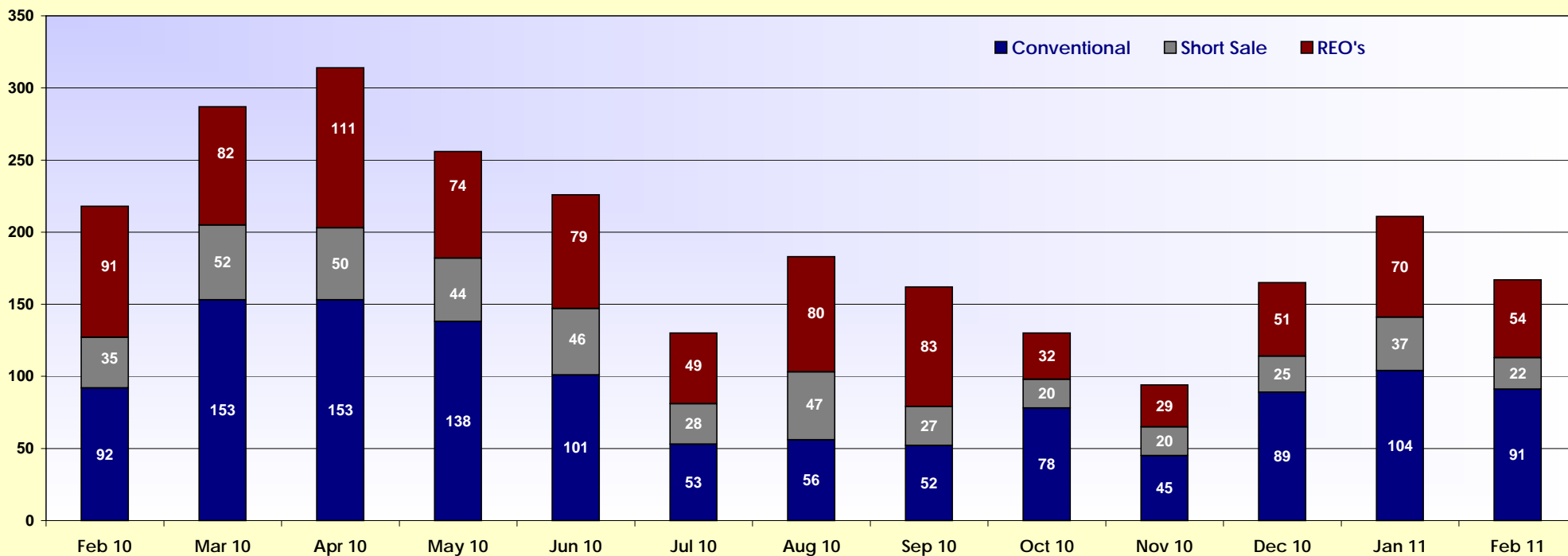
■ Conventional ■ Short Sale ■ REO's



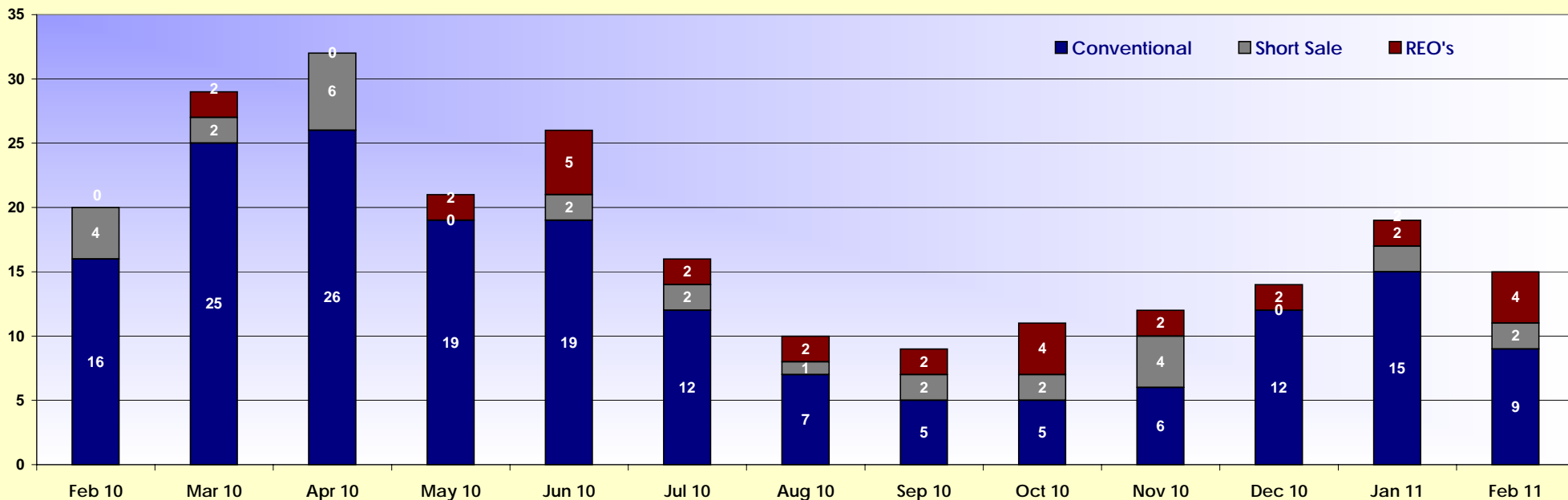


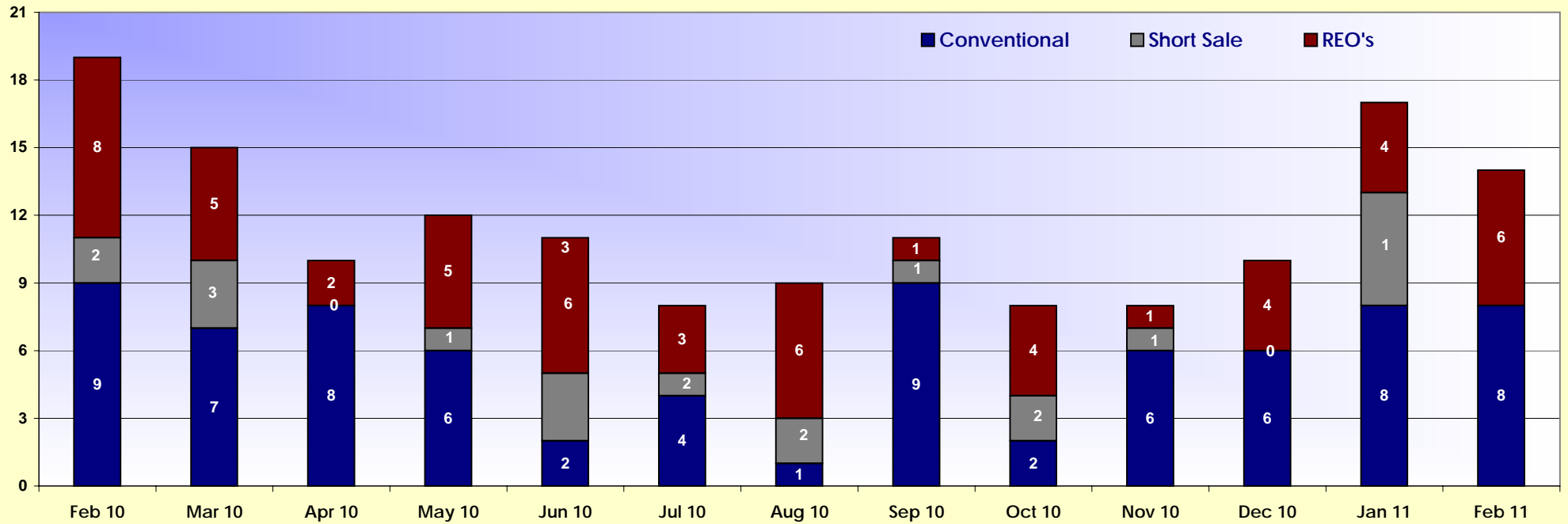
Lee County Condo's - Sold 2010 - 2011



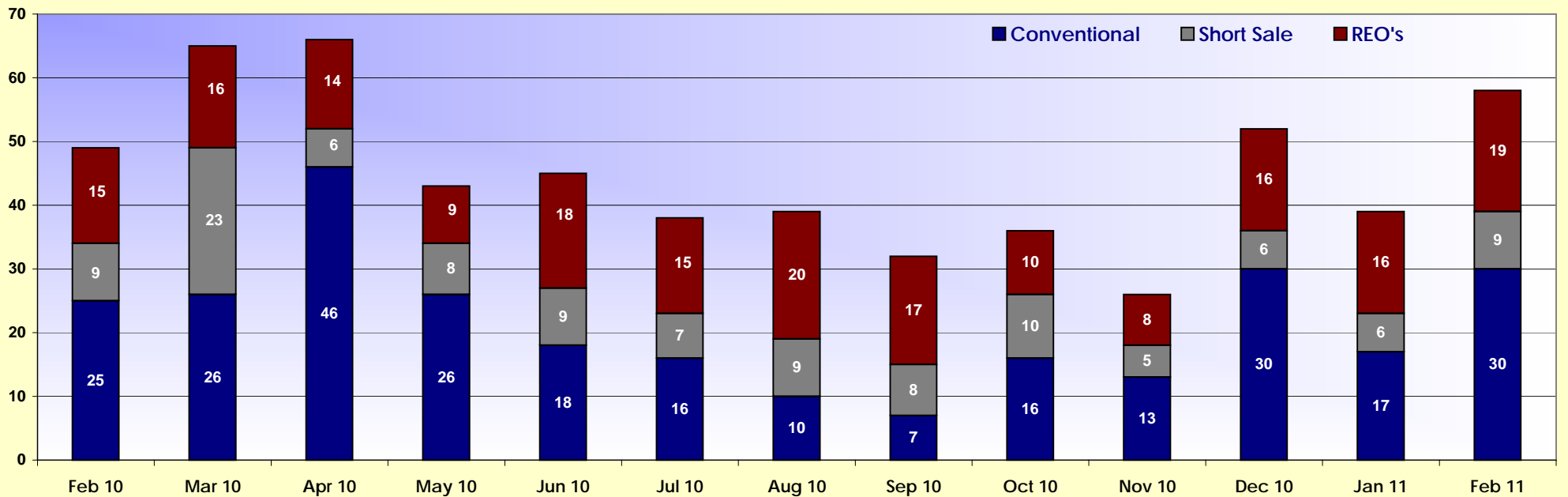


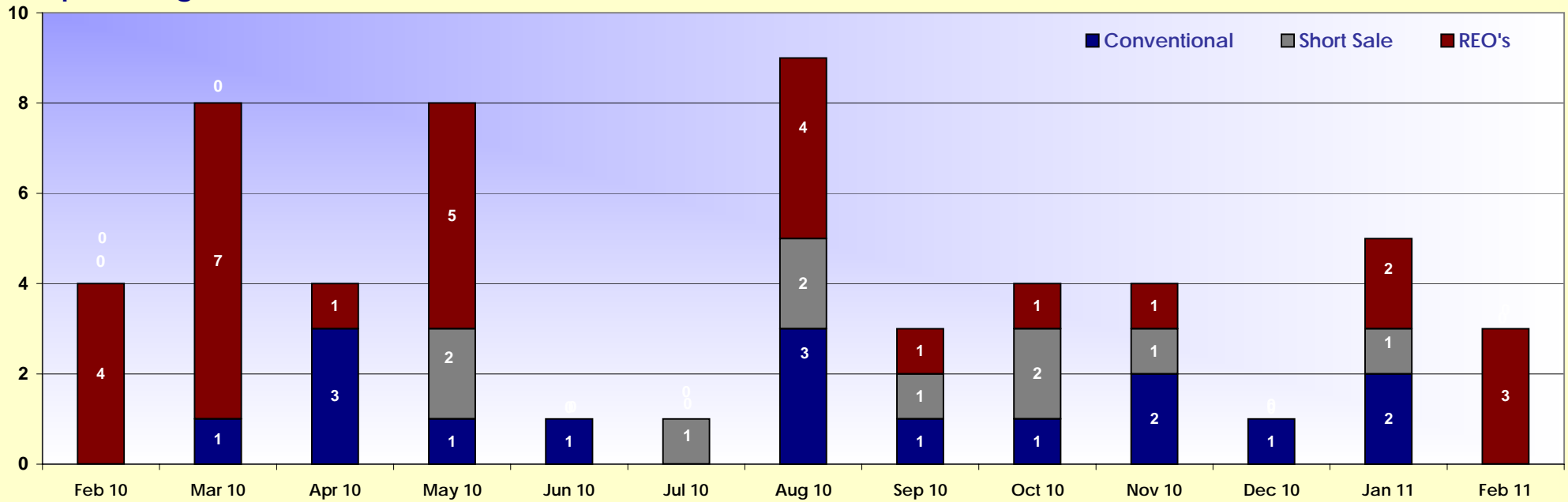
Condo's Sold - Fort Myers Beach 2010 - 2011



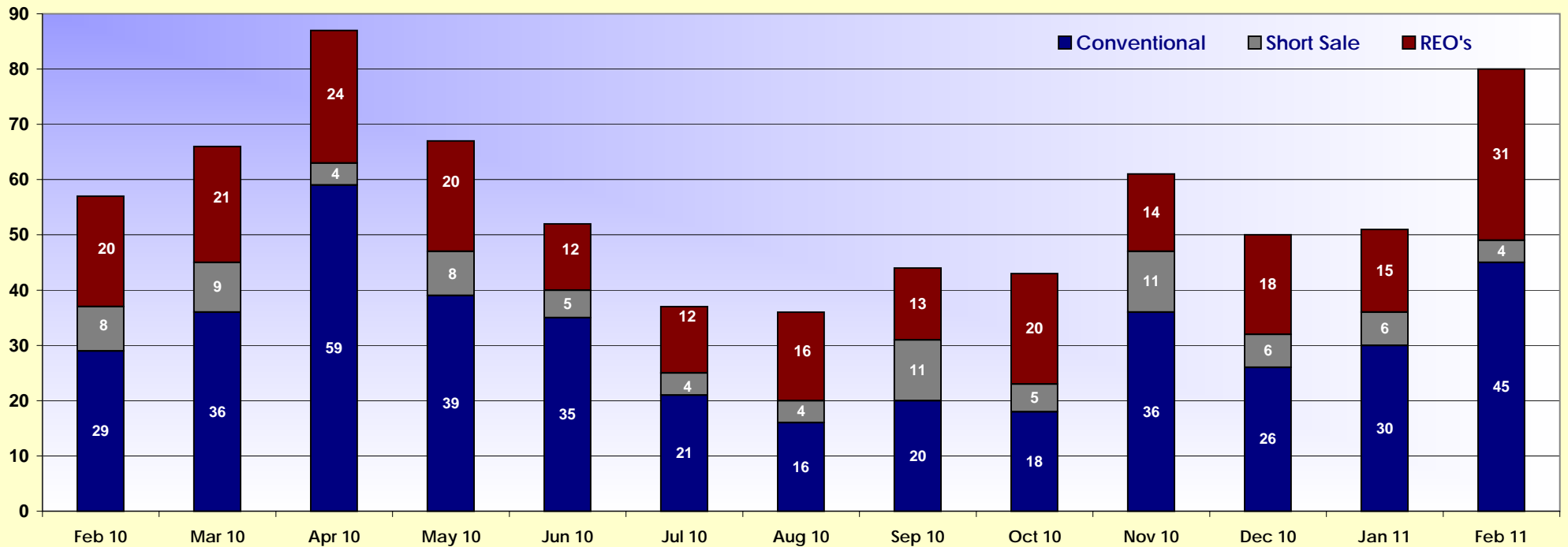


Condo's Sold - Cape Coral 2010-2011



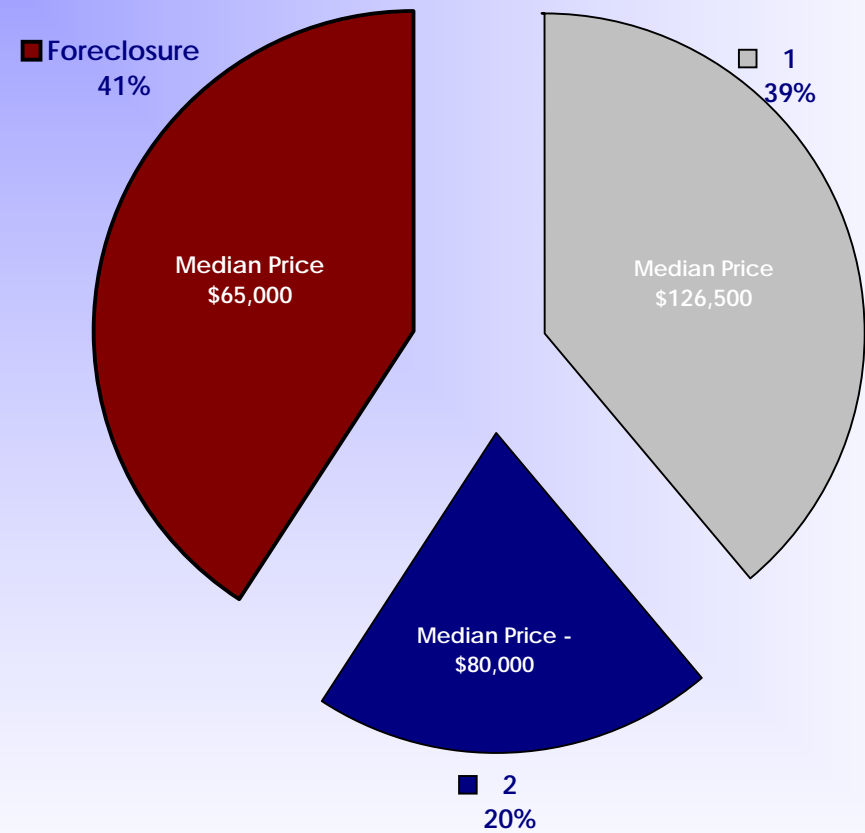
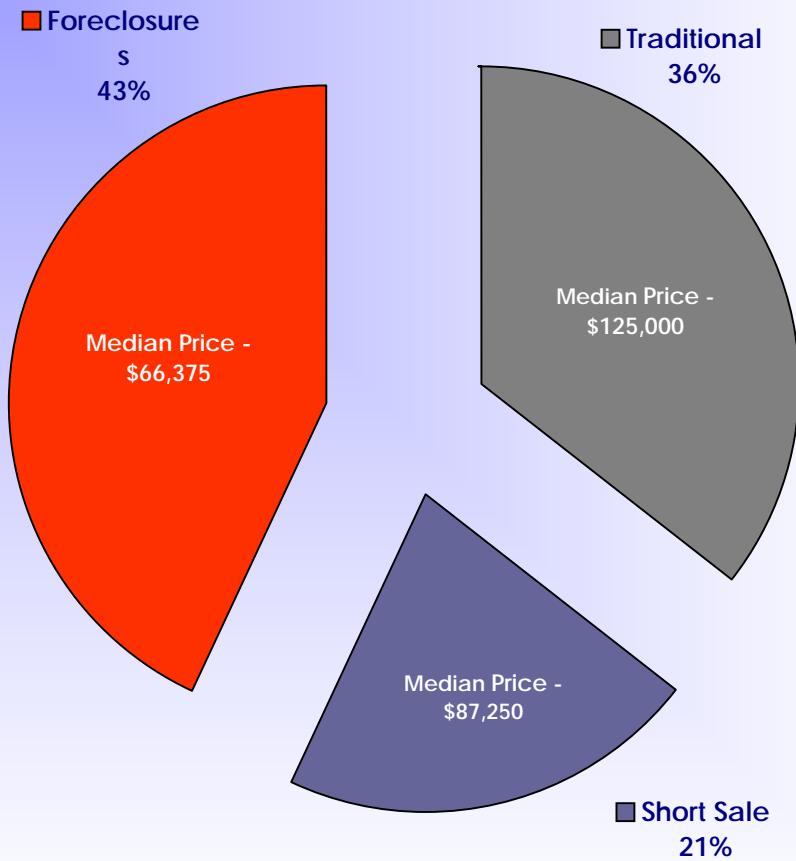


Condo's Sold - Other Areas 2010-2011



Sold Listings - July 2010 - September 2010**

Sold Listings - October 2010 - December 2010**



Sold Listings July 2010 - September 2010

	# of listings	Percentage	Median Price
Traditional	1,206	36%	\$ 125,000
Short Sale	726	21%	\$ 87,250
Foreclosures	1,454	43%	\$ 66,375
Total	3,386		

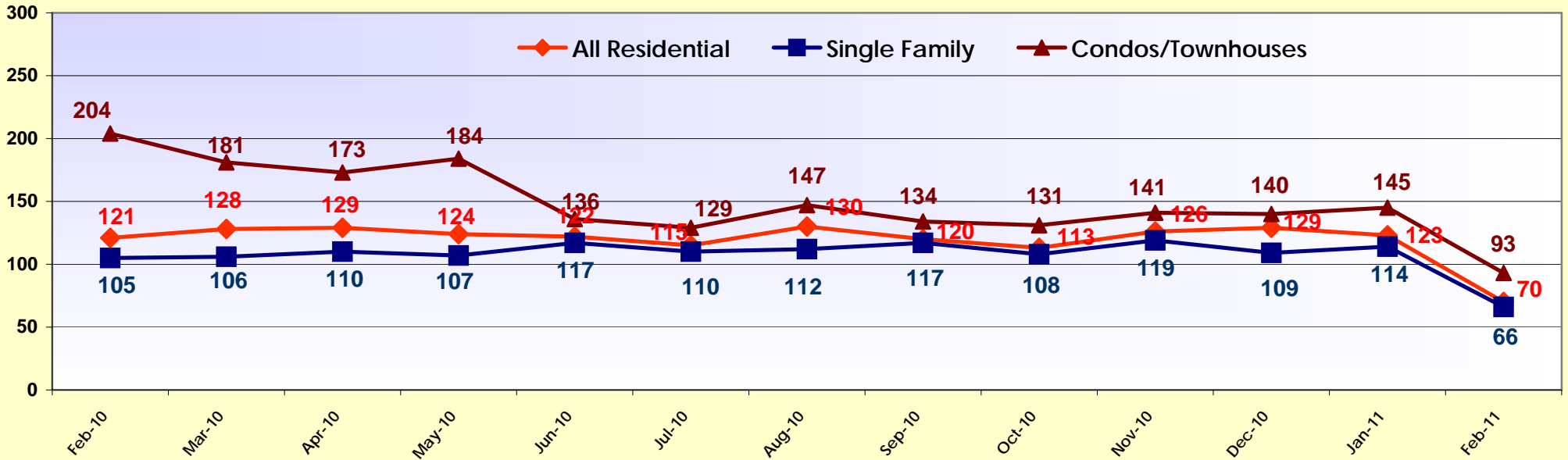
Sold Listings October 2010 - December 2010

	# of listings	Percentage	Median Price
Traditional	1,358	39%	\$ 126,500
Short Sale	706	20%	\$ 80,000
Foreclosures	1,423	41%	\$ 65,000
Total	3,487		

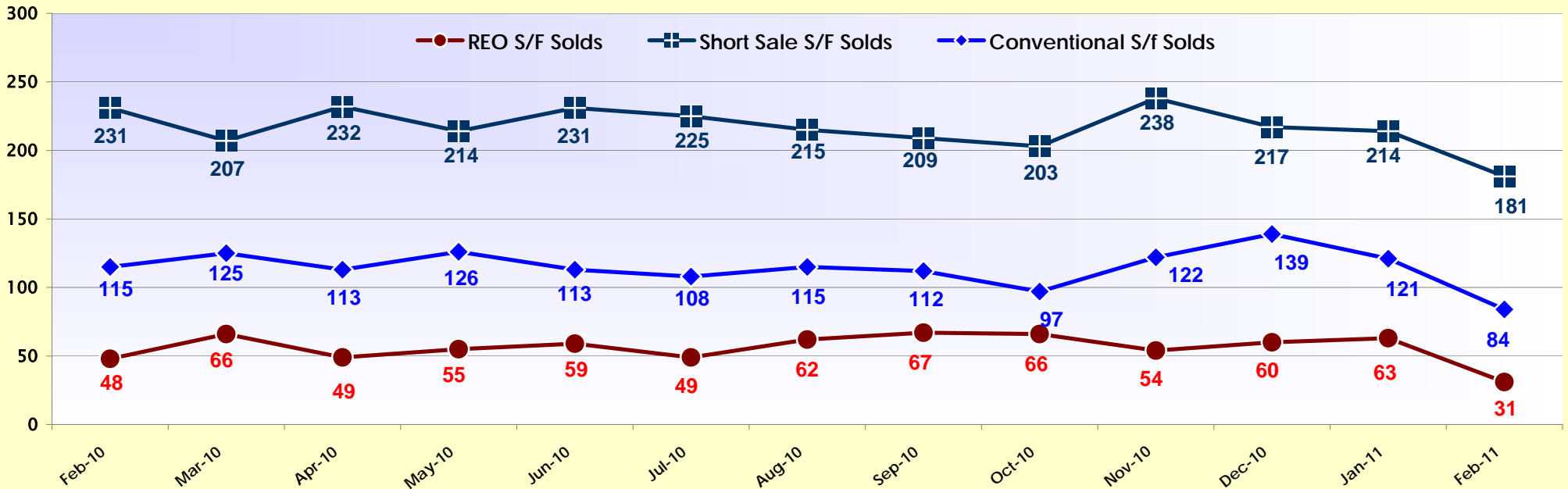
** This chart is published quarterly.

Days On Market - Last 12 Months - Solds

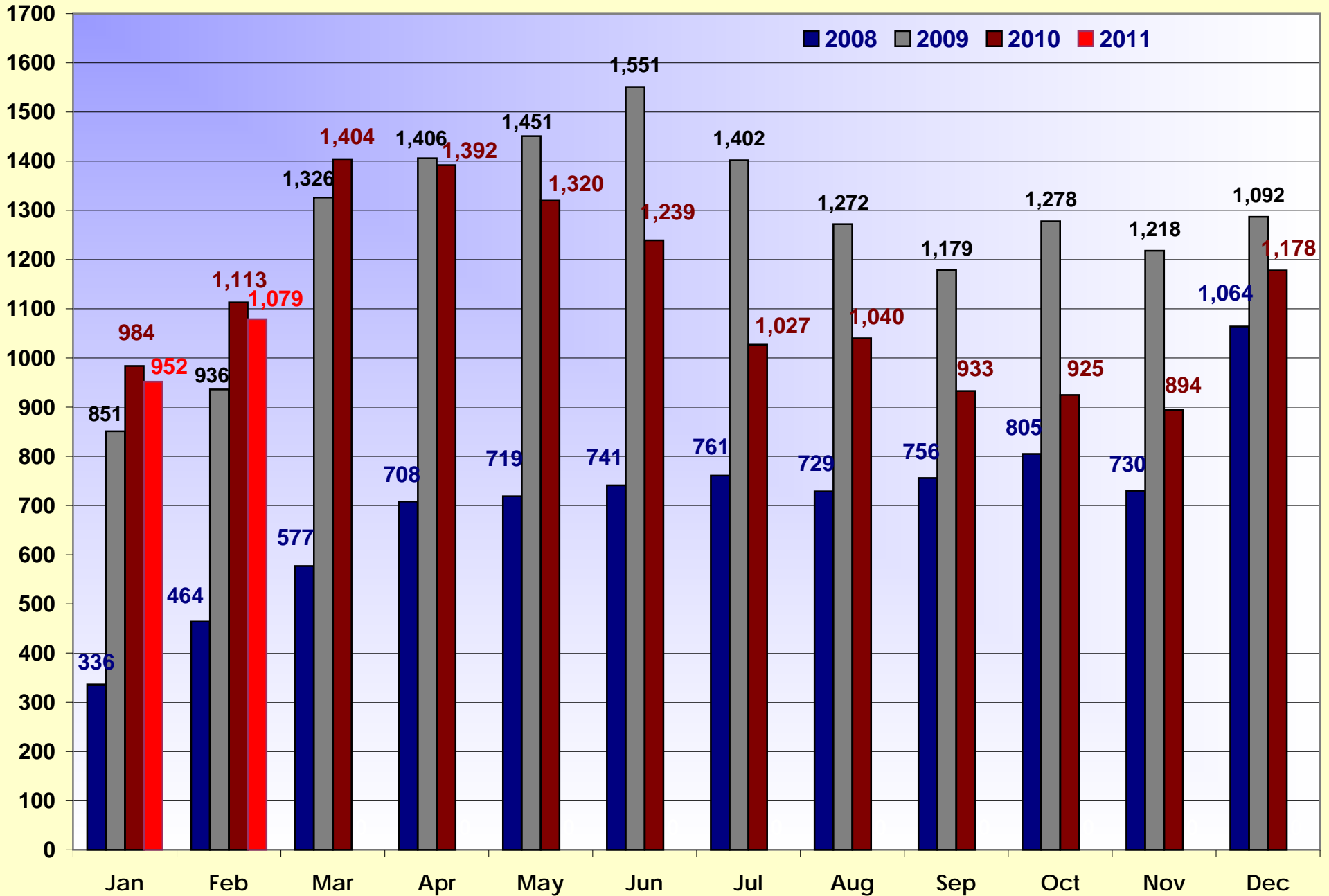
All Residential/Single Family/Condos/Townhouses



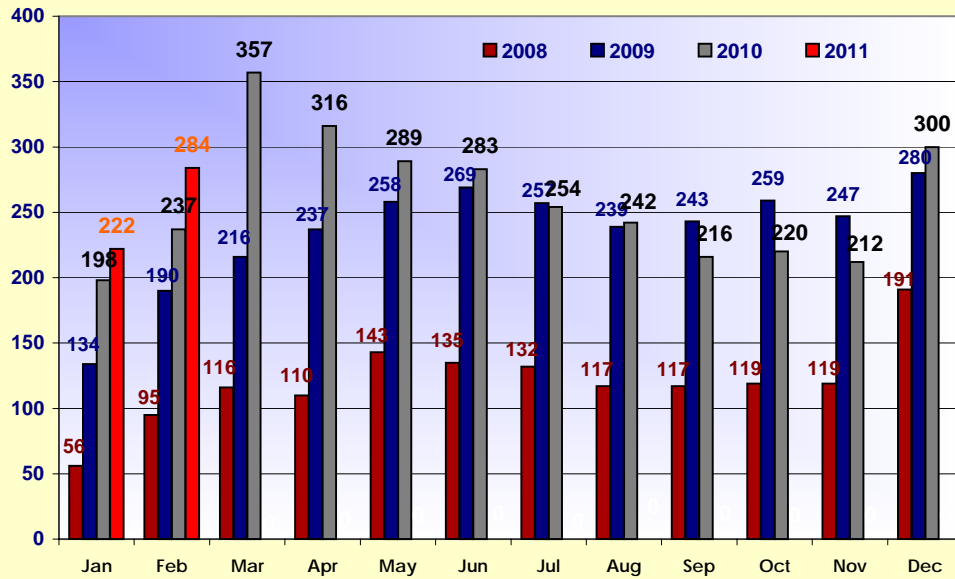
Days On Market - Single Family By Type



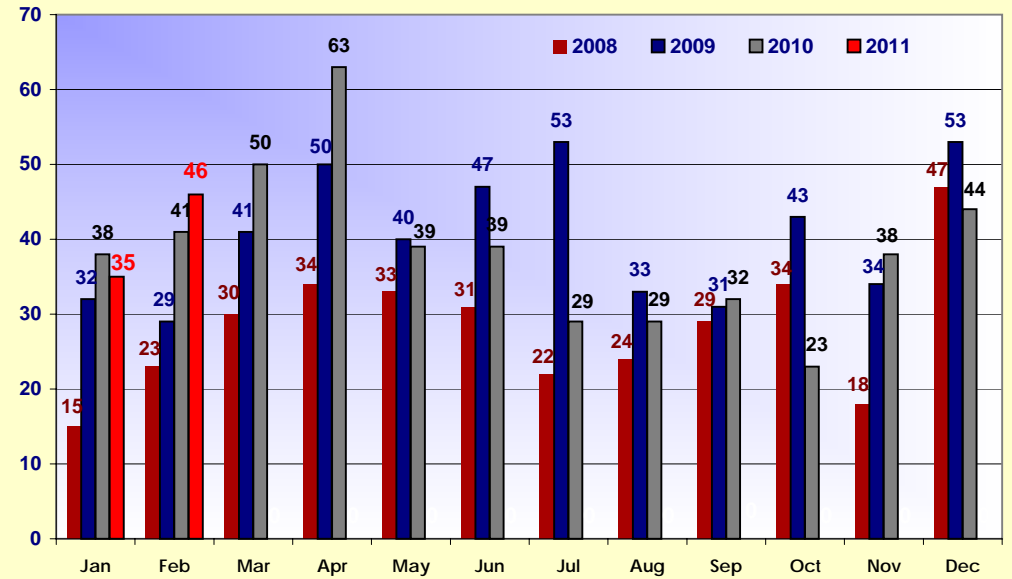
Average # of DOM for Sold Residential Listings calculated by Rapattoni



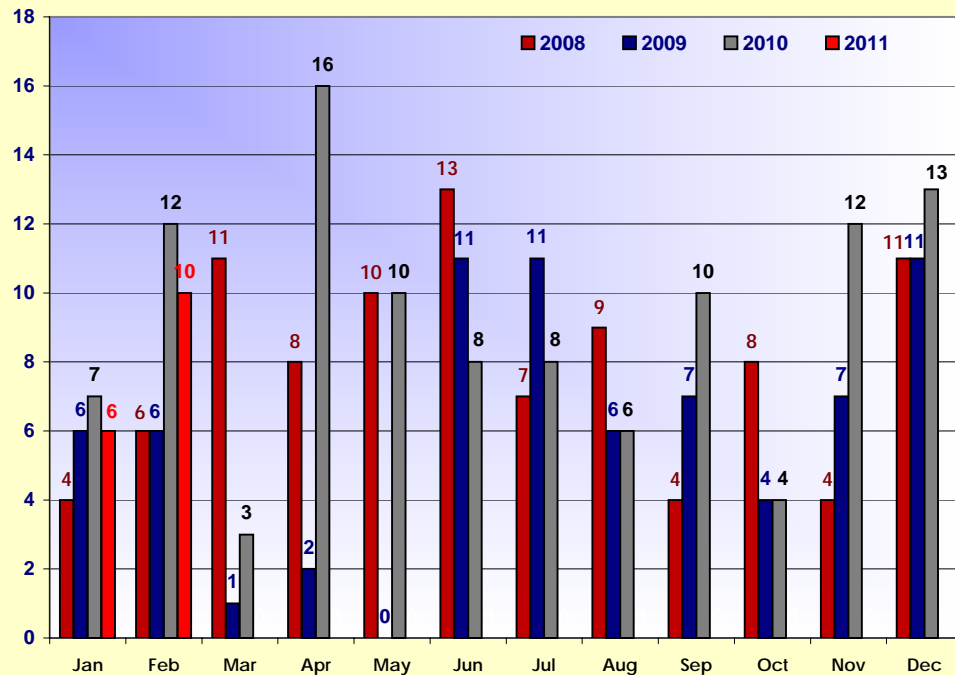
2008-2011 Sold Single Family - Fort Myers



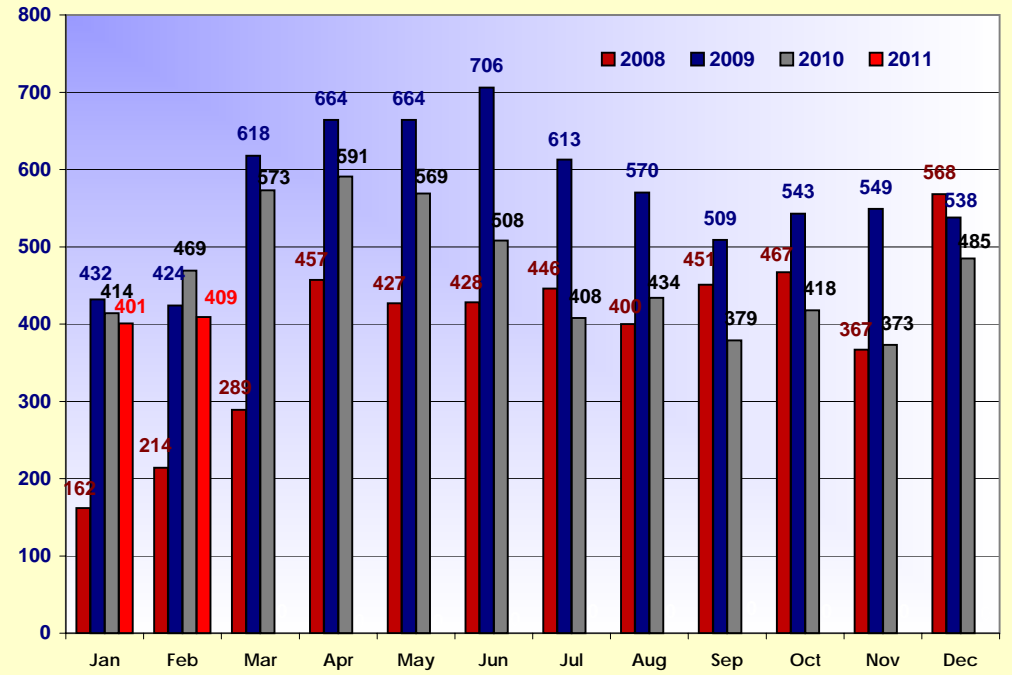
2008-2011 Sold Single Family - North Fort Myers



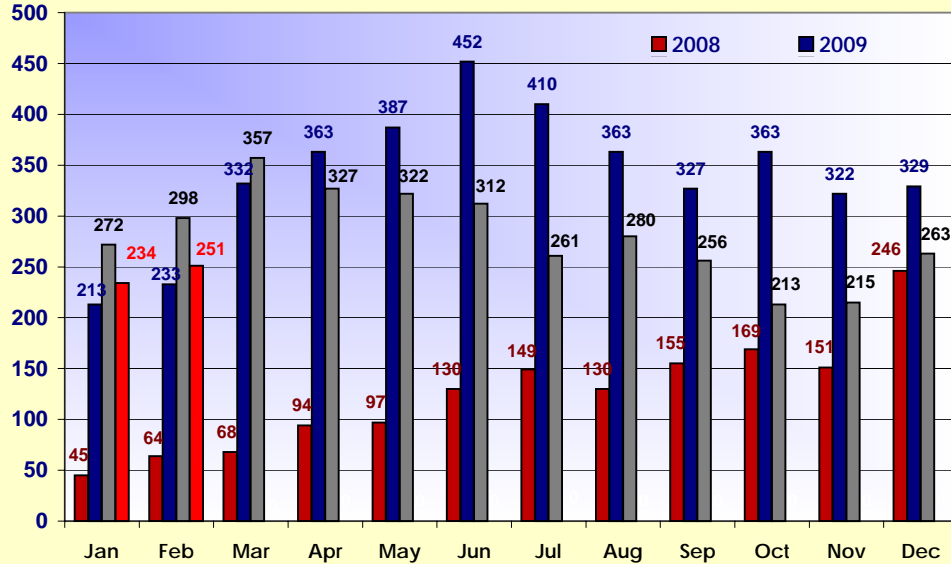
2008-2011 Sold Single Family - Fort Myers Beach



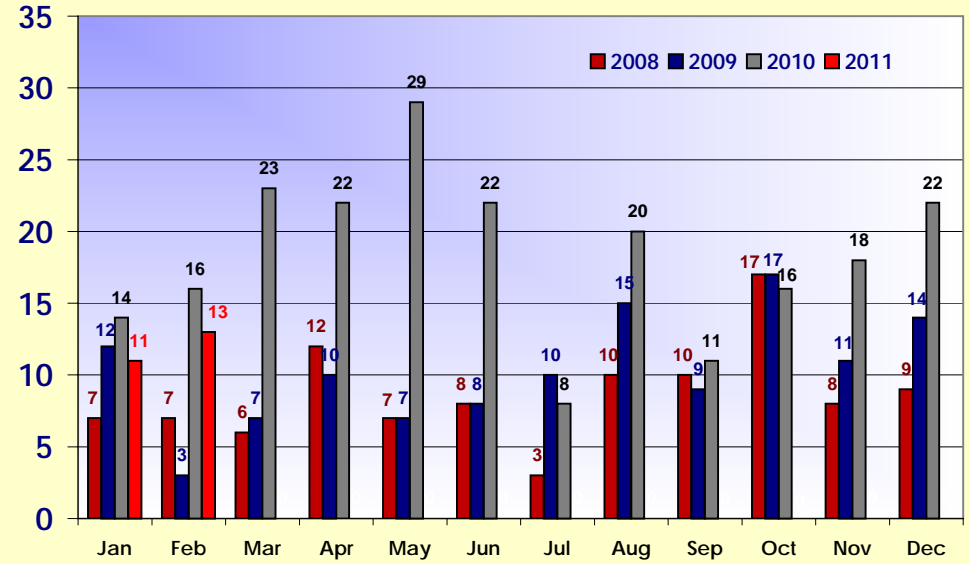
2008-2011 Sold Single Family - Cape Coral



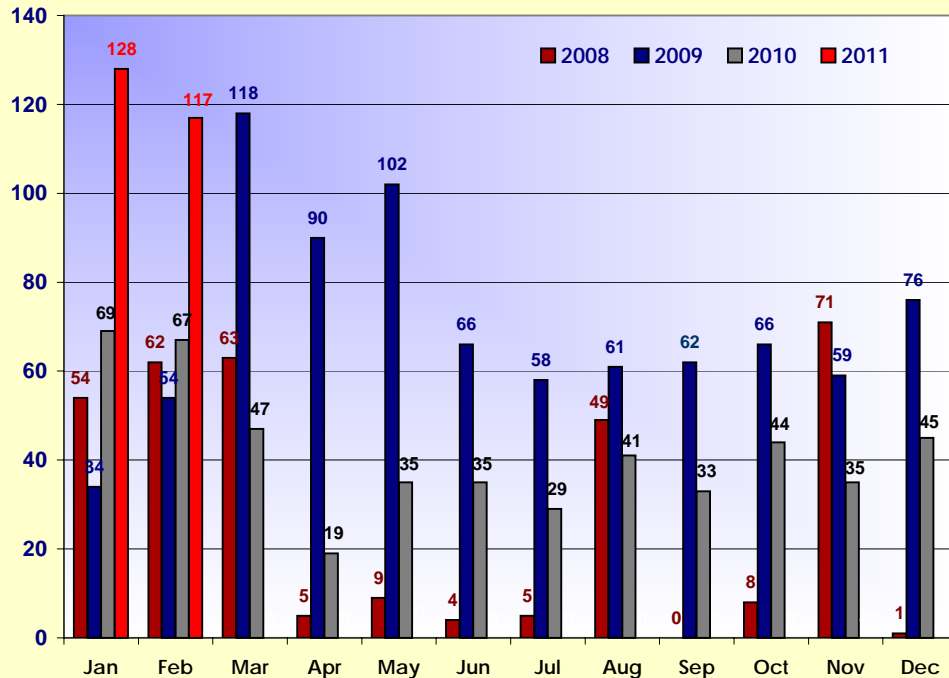
2008-2011 Sold Single Family - Lehigh Acres



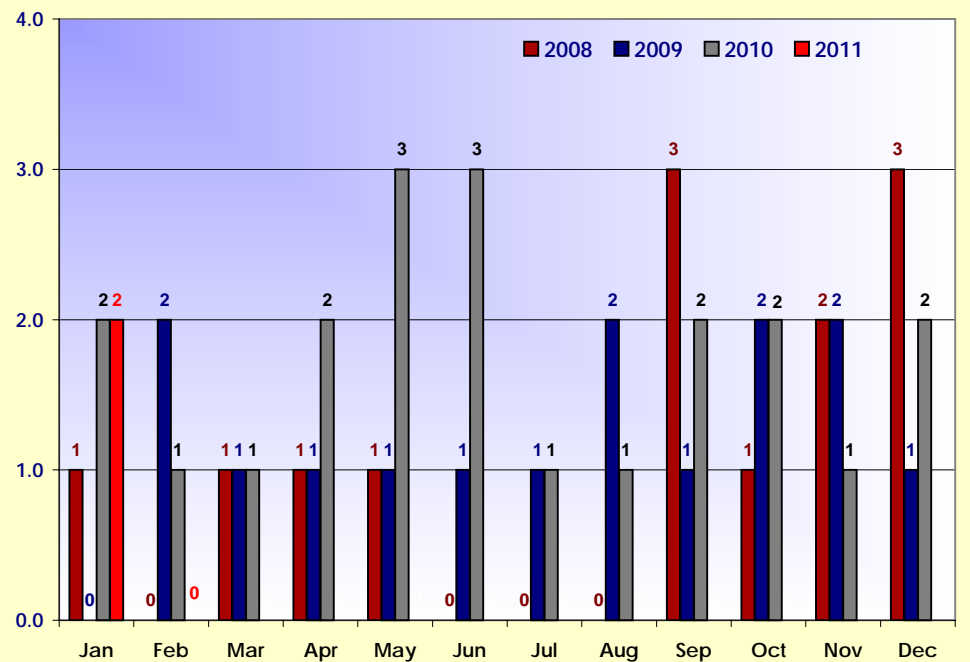
2008-2011 Sold Single Family - Hendry County

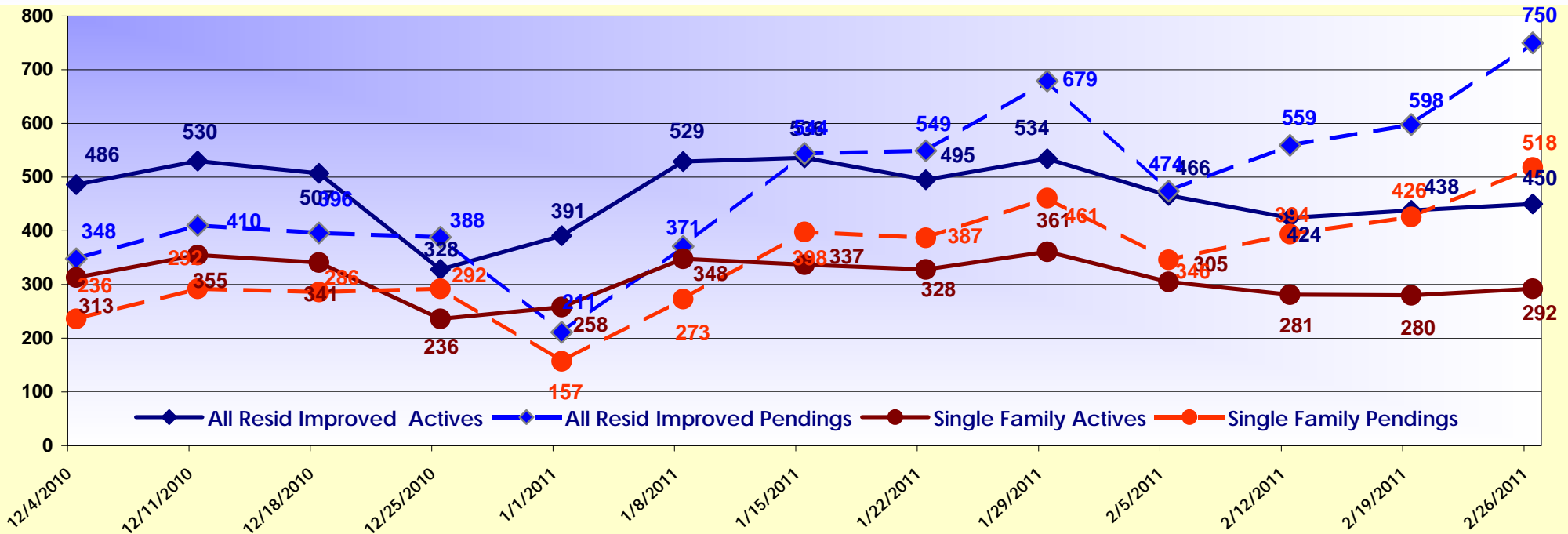


2008-2011 Sold Single Family - Other Areas

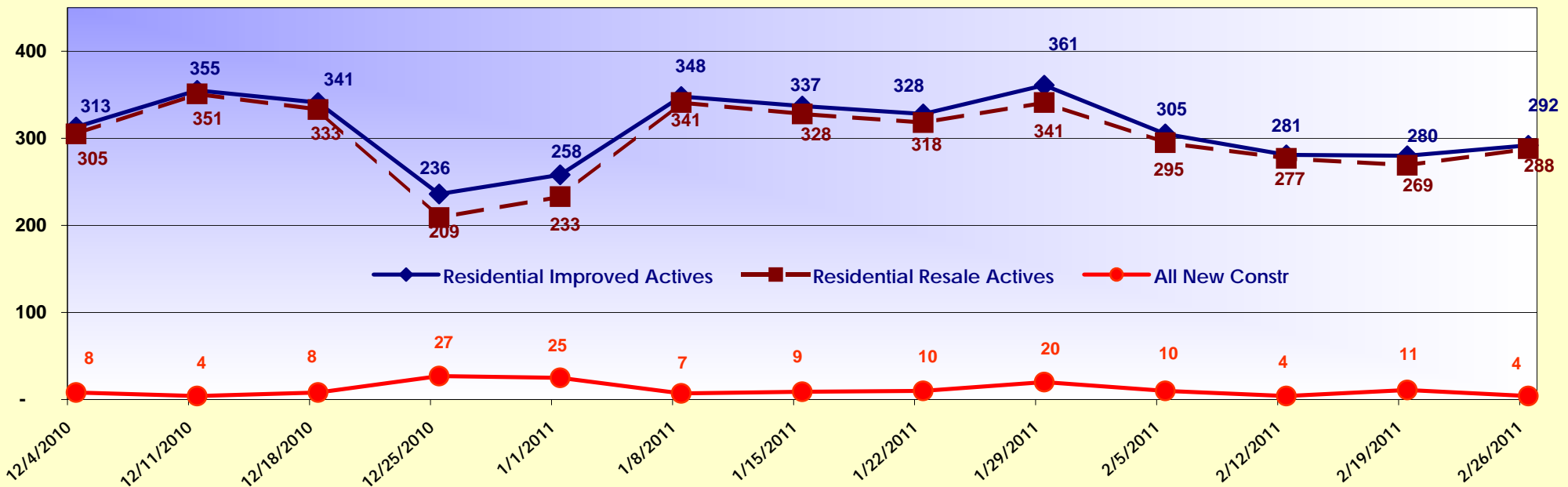


2008-2011 Sold Single Family - Glades County

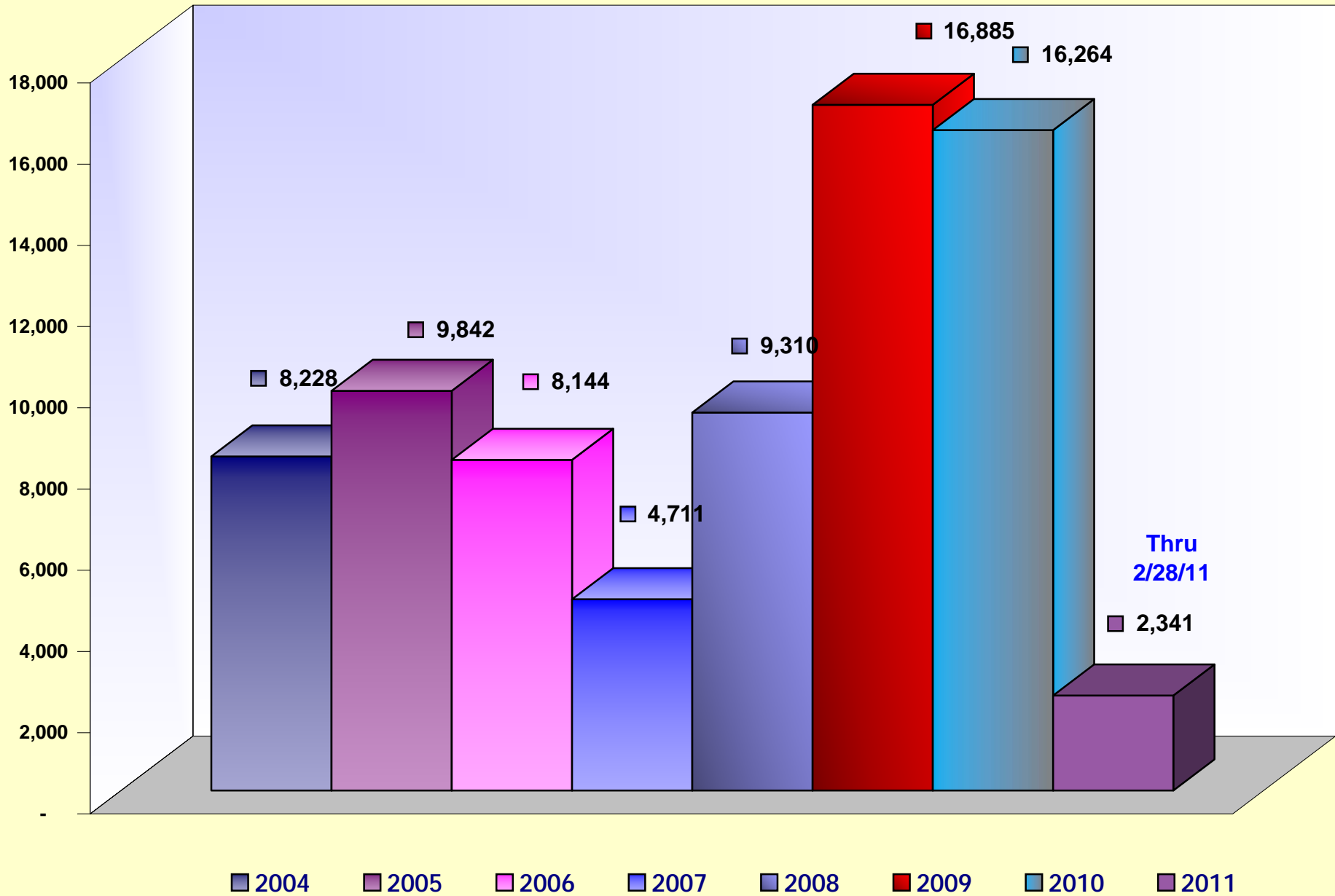




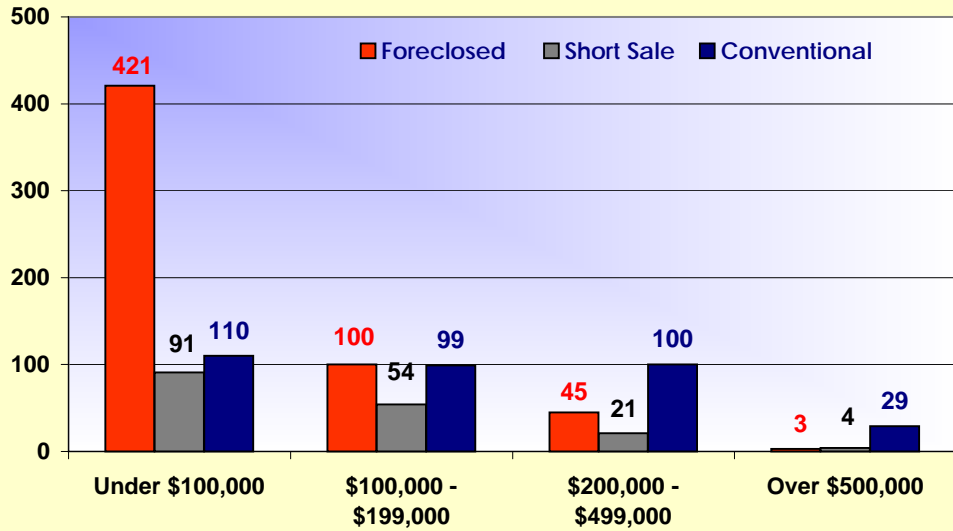
Residential Weekly Market Activity - Past 3 Months Resale & New Construction



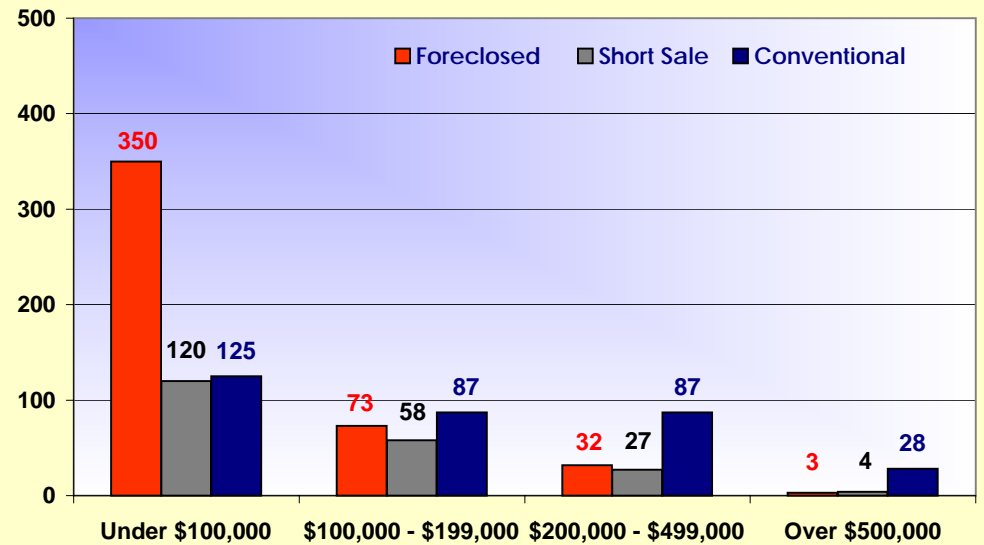
Single Family Solds By Year



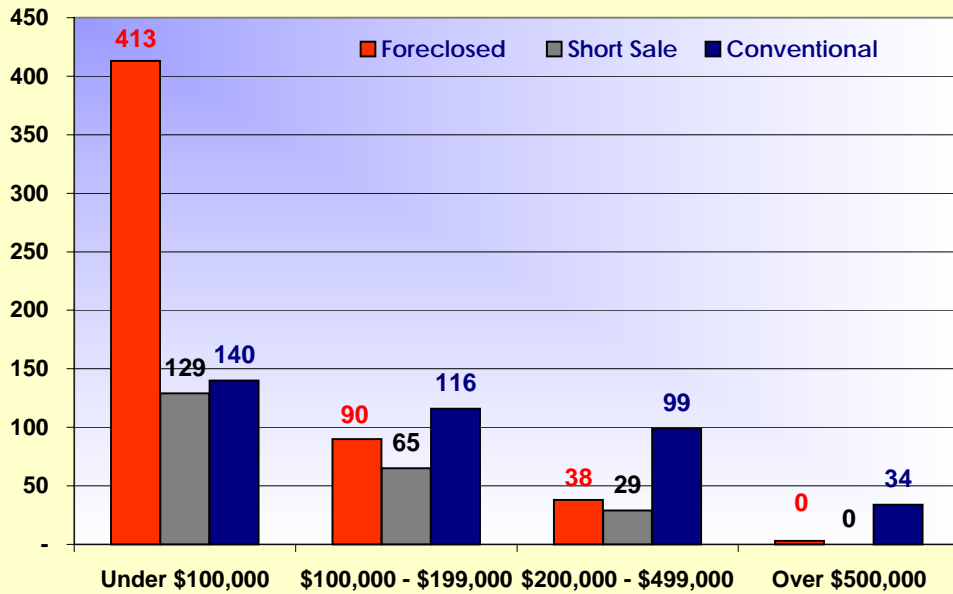
January 2010



January 2011



February 2010



February 2011

