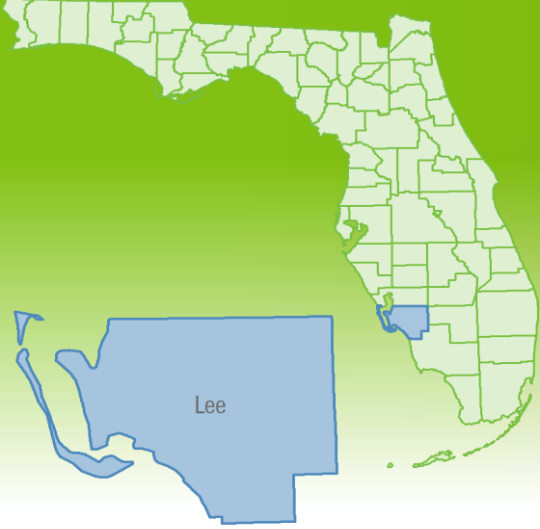


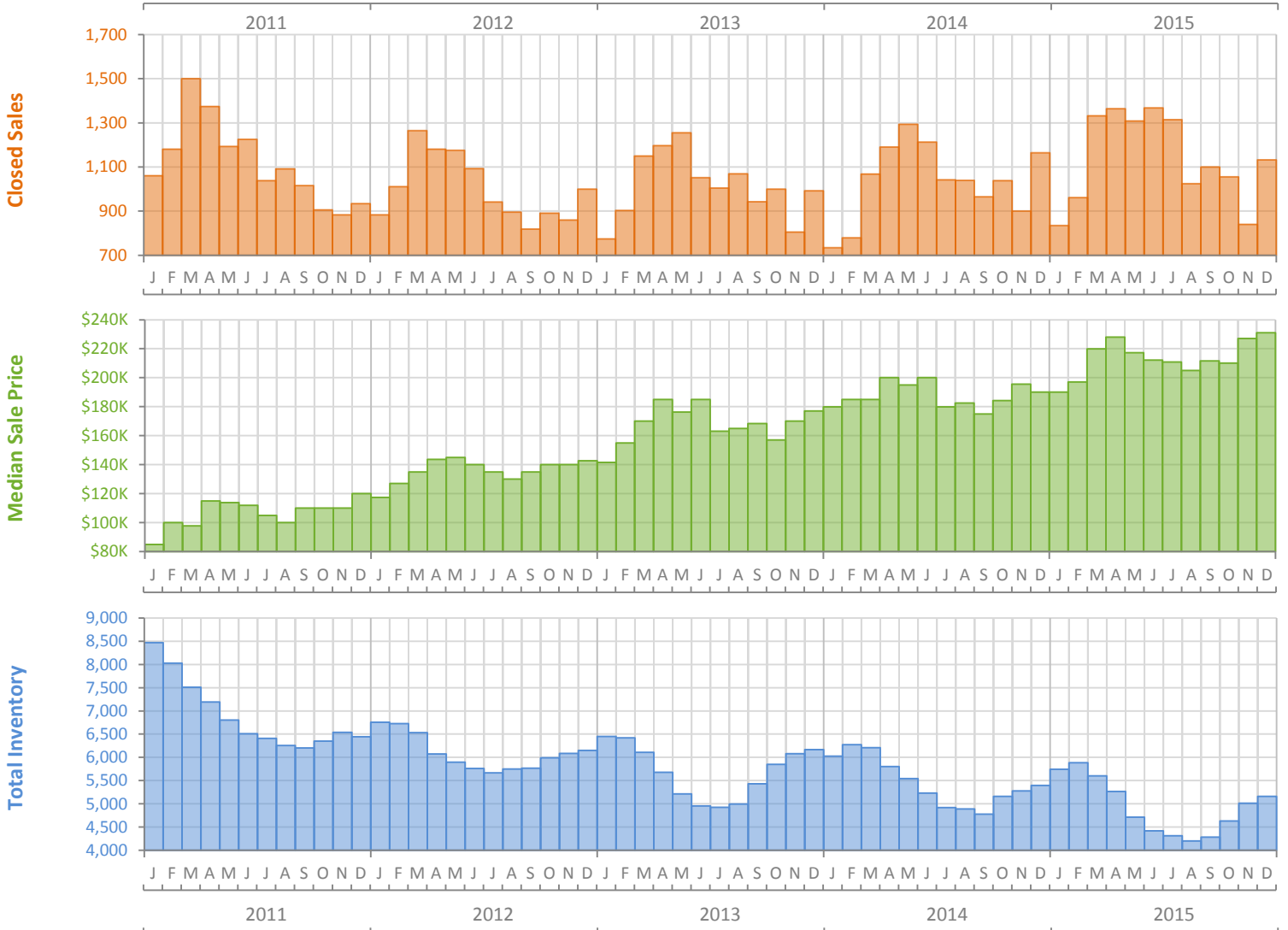
Monthly Market Summary - December 2015

Single Family Homes

Lee County



	December 2015	December 2014	Percent Change Year-over-Year
Closed Sales	1,132	1,165	-2.8%
Cash Sales	452	507	-10.8%
New Pending Sales	997	1,039	-4.0%
New Listings	1,405	1,467	-4.2%
Median Sale Price	\$231,000	\$190,000	21.6%
Average Sale Price	\$333,735	\$284,741	17.2%
Median Days on Market	30	34	-11.8%
Avg. Percent of Original List Price Received	95.0%	94.7%	0.3%
Pending Inventory	1,546	1,640	-5.7%
Inventory (Active Listings)	5,162	5,394	-4.3%
Months Supply of Inventory	4.5	5.2	-12.8%



Produced by Florida REALTORS® with data provided by Florida's multiple listing services. Statistics for each month compiled from MLS feeds on the 15th day of the following month. Data released on Friday, January 22, 2016. Next data release is Tuesday, February 23, 2016.

Monthly Distressed Market - December 2015

Single Family Homes

Lee County



		December 2015	December 2014	Percent Change Year-over-Year
Traditional	Closed Sales	1,021	927	10.1%
	Median Sale Price	\$244,000	\$210,000	16.2%
Foreclosure/REO	Closed Sales	96	203	-52.7%
	Median Sale Price	\$152,539	\$132,000	15.6%
Short Sale	Closed Sales	15	35	-57.1%
	Median Sale Price	\$105,000	\$118,000	-11.0%

