

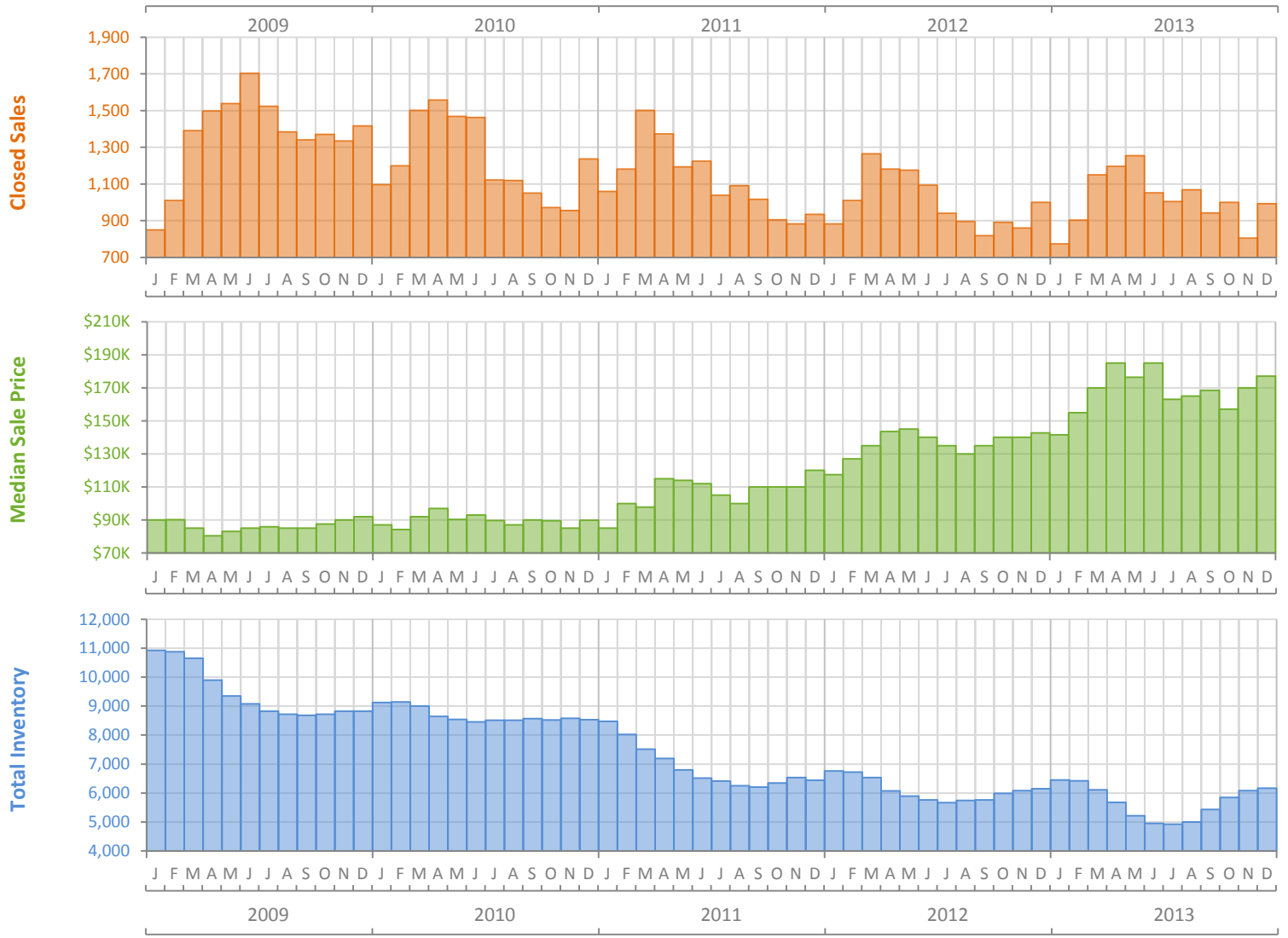
# Monthly Market Summary - December 2013

## Single Family Homes

### Lee County



	December 2013	December 2012	Percent Change Year-over-Year
Closed Sales	992	1,000	-0.8%
Cash Sales	532	622	-14.5%
New Pending Sales	851	1,018	-16.4%
New Listings	1,471	1,408	4.5%
Median Sale Price	\$177,000	\$142,750	24.0%
Average Sale Price	\$269,789	\$239,186	12.8%
Median Days on Market	43	51	-15.7%
Avg. Percent of Original List Price Received	93.5%	93.4%	0.1%
Pending Inventory	1,625	(No Data)	N/A
Inventory (Active Listings)	6,169	6,147	0.4%
Months Supply of Inventory	6.1	6.1	-0.7%



Produced by Florida REALTORS® with data provided by Florida's multiple listing services. Statistics for each month compiled from MLS feeds on the 15th day of the following month. Data released on Thursday, January 23, 2014. Next data release is Friday, February 21, 2014.

# Monthly Distressed Market Summary - December 2013

## Single Family Homes

### Lee County



		December 2013	December 2012	Percent Change Year-over-Year
Traditional	Closed Sales	716	614	16.6%
	Median Sale Price	\$225,000	\$175,000	28.6%
Foreclosure/REO	Closed Sales	197	202	-2.5%
	Median Sale Price	\$109,578	\$112,000	-2.2%
Short Sale	Closed Sales	79	184	-57.1%
	Median Sale Price	\$130,000	\$98,000	32.7%

